

TUBE SHAFTS



**J300P-7
MAY 2002**

**Supersedes
Section 7, Dated
January 2001**



People Finding A Better Way[®]

HOW TO USE THIS CATALOG

Determine which type of tube shaft you have

Slip tube shaft

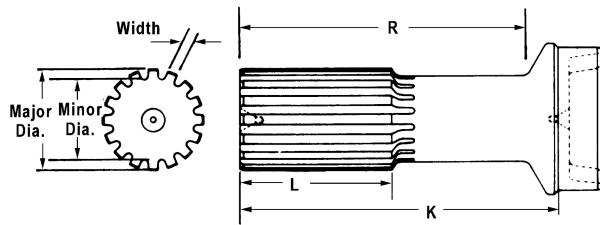
Midship tube shaft

Style used with a companion flange or end yoke

Style used with Outboard Slip Yokes

To identify a Slip Tube Shaft:

1. Determine spline O.D.
2. Determine number of teeth
3. Determine tube diameter
4. Determine wall thickness
5. Determine weld to end of spline dimension
Check other dimensions listed
6. Determine part number



Note: Spline is Glidecote except where footnoted.

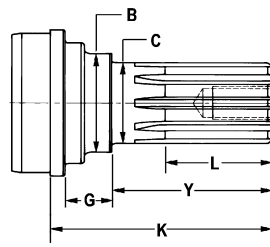
Note: Butt Diameter should be .007" to .010" larger than the Inside Diameter of the tube.

SPLINE DIMENSIONS		L	K	Fits Tube		R	Spicer Part Number
Major Diameter	Number of Teeth of Spline	Length of Spline	End of Spline to Weld	Diameter	Wall Thickness	End of Spline to Radius	
1.0620-16 Spline							
1.0620	16	1.7500	4.2810	1.2500	.0950	4.0000	1-42-31
1.0620	16	2.0000	4.6880	1.2500	.0950	4.3120	1-42-341
1.0620	16	2.0000	5.3440	1.2500	.0950	4.9380	1-42-101
1.0620	16	2.0000	4.6880	1.2500	.1200	4.3120	<i>Spline not Glidecoted</i> 1-42-351

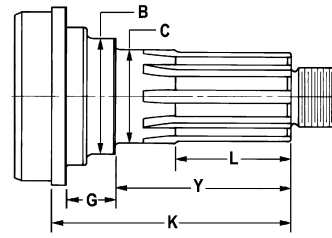
To identify a Companion flange or End Yoke Style Midship Tube Shaft:

1. Determine bearing diameter
2. Determine spline O.D.
3. Determine number of teeth
4. Determine tube diameter
5. Determine wall thickness
6. Determine end of spline to bearing shoulder dimension
7. Determine weld to end of spline dimension
8. Make sure thread type and size match part being identified
Check other dimensions listed
9. Determine part number





Style 1



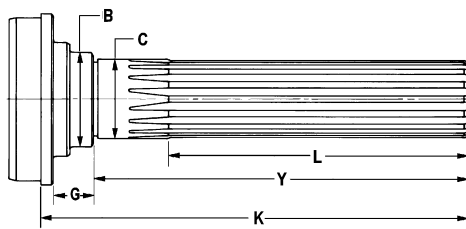
Style 2

Note: Butt Diameter should be .007" to .010" larger than Inside Diameter of the tube.

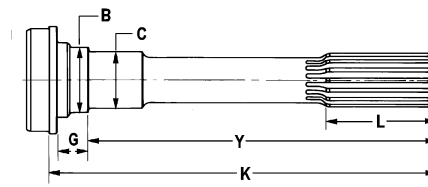
C	L	K	Thread Size	S t y l e	Fits Tube		Y	B	G	Midship Tube Shaft Part Number
					Tube Dia.	Wall Thickness				
2.3500-46 Involute Spline										
2.3620 Bearing Diameter										
2.3622/2.3616	2.6180	5.3110	M30X6G	2	4.3300	.1970	4.0000	2.8860	.8110	140-53-21
2.3622/2.3617	2.6250	5.3120	1.250-18	2	4.0620	.1650	4.0000	2.8750	.8120	6.3-53-21
<i>Spline has helix on tooth. End yokes will be a tight fit.</i>										
2.3622/2.3617	2.6250	5.3120	1.250-18	2	4.5000	.2590	4.0000	2.8750	.8120	6.5-53-181
<i>Spline has helix on tooth. End yokes will be a tight fit.</i>										
2.3622/2.3617	2.6250	5.3120	1.250-18	2	4.5620	.1650	4.0000	2.8750	.8120	6.5-53-171

To identify an Outboard Slip Yoke Style Midship Tube Shaft:

1. Determine bearing diameter
2. Determine spline O.D.
3. Determine number of teeth
4. Determine tube diameter
5. Determine wall thickness
5. Determine end of spline to bearing shoulder dimension
7. Determine weld to end of spline dimension
8. Make sure style of shaft matches part being identified
9. Check other dimensions listed
10. Determine part number



Style 1



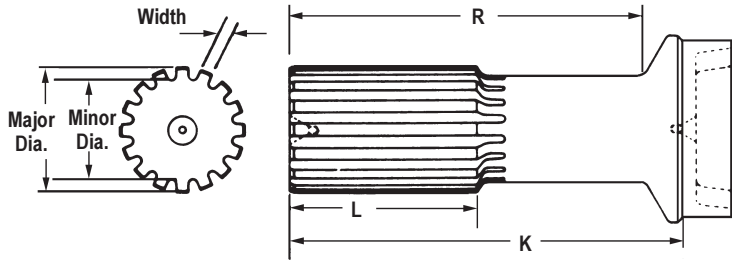
Style 2

Note: Spline is Glidecote except where footnoted.

Note: Butt Diameter should be .007" to .010" larger than Inside Diameter of the tube.

C	L	K	S t y l e	Fits Tube		Y	B	G	Midship Tube Shaft Part Number	
				Diameter	Wall Thickness					
1.3750-15 Based On 16 Spline										
1.3780 Bearing Diameter										
1.3784/1.3779	2.5000	8.4690	2	2.5000	.0830	7.4060	1.6880	.8120	2-53-921	
1.3784/1.3779	2.5000	8.8750	2	2.5000	.0830	7.8120	1.6880	.8120	2-53-681	
1.3784/1.3779	2.5000	8.8750	2	3.0000	.0650	7.8120	1.6880	.8120	2-53-691	
1.3784/1.3779	3.0000	8.7500	2	3.0000	.0830	6.9690	1.6880	1.600	2-53-1371	





Note: Spline is Glidecote except where footnoted.

Note: Butt Diameter should be .007" to .010" larger than the Inside Diameter of the tube.

SPLINE DIMENSIONS		L	K	Fits Tube		R	Spicer Part Number
Major Diameter	Number of Teeth of Spline	Length of Spline	End of Spline to Weld	Diameter	Wall Thickness	End of Spline to Radius	
1.0620-16 Spline							
1.0620	16	1.7500	4.2810	1.2500	.0950	4.0000	1-42-31
1.0620	16	2.0000	4.6880	1.2500	.0950	4.3120	1-42-341
							<i>Spline not Glidecoted</i>
1.0620	16	2.0000	5.3440	1.2500	.0950	4.9380	1-42-101
							<i>Spline not Glidecoted</i>
1.0620	16	2.0000	4.6880	1.2500	.1200	4.3120	1-42-351
1.1250-26 Involute Spline							
1.1250	26 I	2.0000	4.4380	1.2500	.0950	4.1880	10-40-11
							<i>Spline not Glidecoted</i>
1.1250	26	1.5830	7.3200	2.5000	.0650	6.6650	27-40-31
1.2500-15 Based On 16 Spline							
1.2500	15/16	2.0000	7.9380	1.2500	.0950	7.6560	2-42-181
1.2500	15/16	2.0000	4.4690	1.7500	.0650	3.9380	2-40-1071
1.2500-16 Spline							
1.2500	16	2.0000	4.6880	1.2500	.0950	4.3120	2-42-281
1.2500	16	2.0000	5.0620	1.2500	.0950	4.6880	2-42-131
							<i>Spline not Glidecoted</i>
1.2500	16	2.0000	6.0310	1.2500	.0950	5.5000	2-42-221
1.2500	16	1.9060	6.1250	1.2500	.1200	5.3750	2-40-1771
1.2500	16	2.0000	6.1250	1.2500	.1880	5.3910	2-42-501
1.2500	16	2.0000	4.4690	1.7500	.0650	3.9380	2-40-971
1.2500	16	2.0000	5.9690	1.7500	.0950	5.4380	2-40-2241
1.2500	16	2.0000	4.8750	2.0000	.0650	4.2810	2-40-1011
1.2500	16	3.4400	5.6200	2.0000	.0830	5.1880	2-40-1661
1.2500	16	2.0000	6.0000	2.0000	.0830	5.4060	2-40-1741
1.2500	16	2.0000	6.0000	2.0000	.1200	5.4060	2-40-2381
1.2500	16	2.5000	7.6250	2.0000	.1200	7.0310	2-40-2221
1.2500	16	2.0000	5.0620	2.5000	.0650	4.3440	2-40-801
1.2500	16	2.0000	6.1250	2.5000	.0650	5.4060	2-40-2211
1.2500	16	3.6250	6.1250	2.5000	.0650	5.4060	2-40-2481
1.2500	16	2.5000	7.7500	2.5000	.0650	7.0310	2-40-2301
1.3750-15 Based On 16 Spline							
1.3750	15/16	3.6250	7.5310	2.5000	.0950	6.8120	2-40-2791
1.3750-16 Spline							
1.3750	16	2.7500	5.0900	1.2500	.0950	4.6900	2-42-581
1.3750	16	3.6250	8.1250	1.2500	.1880	7.6400	2-40-2781
1.3750	16	3.6250	6.6560	1.7500	.0950	6.1410	2-40-2741
1.3750	16	3.6250	7.7500	1.7500	.0950	7.3120	2-40-2681
1.3750	16	2.2500	5.1880	2.0000	.0830	4.6250	2-40-1031
1.3750	16	2.2500	6.1880	2.0000	.0830	5.6250	2-40-2451
1.3750	16	2.1250	6.5620	2.0000	.0830	6.0000	2-40-1841
1.3750	16	2.2500	5.1880	2.0000	.1200	4.6250	2-40-2021
1.3750	16	2.2500	6.1880	2.0000	.1200	5.6250	2-40-1701
1.3750	16	3.6250	6.1880	2.0000	.1200	5.6250	2-40-2441
1.3750	16	2.2500	6.1900	2.0000	.1200	5.6200	2-40-2851
							<i>.310 x 30 degree chamfer on spline end</i>
1.3750	16	3.6200	6.7150	2.0000	.1200	6.1400	2-40-2831
1.3750	16	3.6250	7.9060	2.0000	.1200	7.3280	2-40-2661
1.3750	16	2.2500	5.3440	2.5000	.0650	4.6250	2-40-1041

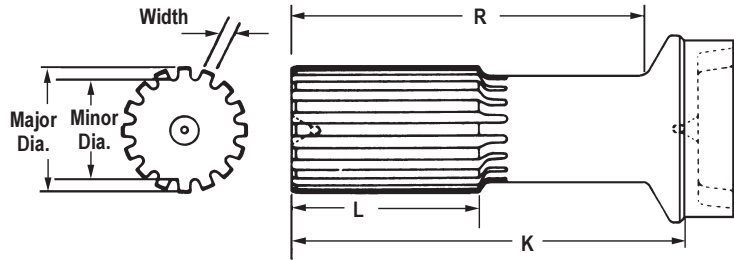


SLIP TUBE SHAFTS



SPLINE DIMENSIONS		L	K	Fits Tube		R	Spicer Part Number
Major Diameter	Number of Teeth of Spline	Length of Spline	End of Spline to Weld	Diameter	Wall Thickness	End of Spline to Radius	
1.3750-16 Spline (Continued)							
1.3750	16	2.2500	6.3440	2.5000	.0650	5.6250	2-40-1811
1.3750	16	2.2500	6.8440	2.5000	.0650	6.1250	2-40-1291
1.3750	16	3.6250	8.0000	2.5000	.0650	7.3120	2-40-2671
1.3750	16	2.2500	5.3440	2.5000	.0830	4.6250	2-40-1131
1.3750	16	2.2500	6.3440	2.5000	.0830	5.6250	2-40-1711
1.3750	16	3.1880	7.1000	2.5000	.0830	6.3750	2-40-2801
1.3750	16	3.0000	7.3750	2.5000	.0830	6.6560	2-40-2871
1.3750	16	2.2500	7.5310	2.5000	.0830	6.8120	2-40-1851
1.3750	16	3.6250	7.5310	2.5000	.0830	6.8130	2-40-2461
1.3750	16	2.2500	7.5310	2.5000	.0830	6.8120	2-40-2631
							<i>Special center in spline end</i>
1.3750	16	3.0000	10.0000	2.5000	.0830	9.3750	2-40-2611
1.3750	16	2.2500	12.6880	2.7500	.0830	11.9380	2-40-2651
1.3750	16	2.2500	5.6250	3.0000	.0650	4.8120	2-40-1211
1.3750	16	2.2500	6.4380	3.0000	.0650	5.6250	2-40-1221
1.3750	16	2.2500	7.6250	3.0000	.0650	6.8120	2-40-2051
1.3750	16	2.2500	6.0500	3.0000	.0830	5.6250	2-40-2811
1.3750	16	2.2500	6.4380	3.0000	.0830	5.6250	2-40-1521
1.3750	16	2.2500	7.6250	3.0000	.0830	6.8120	2-40-2231
1.3750	16	3.0000	7.6250	3.0000	.0830	6.8120	2-40-2691
1.3750	16	6.7810	8.6410	3.0000	.0830	7.8280	2-40-1871
1.3750	16	2.2500	6.6250	3.5000	.0650	5.6250	2-40-1671
1.3750	16	3.6250	7.8750	3.5000	.0650	6.8750	2-40-2761
1.3750	16	2.2500	6.6250	3.5000	.0830	5.6250	2-40-1531
1.3750	16	2.2500	7.9060	3.5000	.0830	6.9060	2-40-2041
1.3750	16	3.6250	7.9060	3.5000	.0830	6.9060	2-40-2531
1.3750	16	6.9060	8.9690	3.5000	.0830	7.9690	2-40-2091
1.3750	16	2.5000	6.7190	4.0000	.0830	5.5620	2-40-1921
1.3750-31 Based On 32 Spline							
1.3750	31/32	3.0000	6.3120	2.0000	.1200	5.7500	2-40-2421
1.3750	31/32	3.5310	7.4380	2.0000	.1200	6.8750	2-40-2361
							<i>Spline not Glidecotched</i>
1.3750	31/32	2.2500	6.3440	2.5000	.0830	5.6250	2-40-2501
							<i>Spline not Glidecotched</i>
1.4370-21 Based On 22 Spline							
1.4370	21/22	3.5000	8.2810	3.5000	.0830	7.3440	3-40-2111
1.4370	21/22	3.5000	8.2810	3.5000	.0830	7.3440	3-40-2241
1.5000-15 Based On 16 Spline							
1.5000	15/16	2.5000	7.8120	2.5000	.1560	7.0940	3-42-451
1.5000	15/16	3.0000	7.4060	3.0000	.0830	6.5940	3-40-531
							<i>Part has wide tooth space, mates w/3-3-768KX</i>
1.5000-16 Spline							
1.5000	16	2.5000	5.6250	2.5000	.0830	4.9690	3-40-1471
1.5000	16	2.5000	5.9380	3.0000	.0830	5.1250	3-40-1101
1.5000	16	3.0000	6.2810	3.0000	.0830	5.4690	3-40-1511
1.5000	16	2.5000	7.2500	3.0000	.0830	6.4380	3-40-1611
1.5000	16	3.0000	7.4060	3.0000	.0830	6.5940	3-40-1421
1.5000	16	3.0000	8.2500	3.0000	.0830	7.4060	3-40-1911
1.5000	16	3.0000	6.5620	3.5000	.0650	5.6250	3-40-1521
1.5000	16	2.5000	7.3440	3.5000	.0650	6.4060	3-40-481
1.5000	16	2.0000	5.3750	3.5000	.0830	4.4380	3-40-2071
1.5000	16	3.0000	6.5620	3.5000	.0830	5.6250	3-40-1531
1.5000	16	2.5000	6.8440	3.5000	.0830	5.8280	3-40-1431
1.5000	16	2.5000	7.3440	3.5000	.0830	6.4060	3-40-1621
1.5000	16	3.0000	7.5310	3.5000	.0830	6.5940	3-40-1491
1.5000	16	3.0000	6.5620	3.5000	.0950	5.6250	3-40-1581
1.5000	16	3.0000	6.8120	4.0000	.0830	5.6250	3-40-1541
1.5000	16	3.0000	7.8750	4.0000	.0830	6.6880	3-40-1501
1.5000	16	2.5000	7.6880	4.5000	.0950	6.4380	3-40-1281





Note: Spline is Glidecote except where footnoted.

Note: Butt Diameter should be .007" to .010" larger than the Inside Diameter of the tube.

SPLINE DIMENSIONS		L	K	Fits Tube		R	Spicer Part Number
Major Diameter	Number of Teeth of Spline	Length of Spline	End of Spline to Weld	Diameter	Wall Thickness	End of Spline to Radius	
1.5620-16 Spline							
1.5620	16	4.7500	13.4060	3.0000	.0830	12.5940	3-40-1711
1.5620	16	3.0000	10.7500	3.5000	.0830	9.8120	3-40-1411
1.5620	16	2.7500	6.5600	3.5000	.0830	5.8120	3-40-1181
1.5620	16	3.0000	6.7500	3.5000	.0830	5.8120	3-40-1571
1.5620	16	3.0000	8.7500	3.5000	.0830	7.8120	3-40-1871
1.5620	16	3.0000	8.9380	4.0000	.0830	7.8120	3-40-1551
1.5620-23 Based On 24 Spline							
1.5620	23/24	3.0000	8.0000	3.5000	.0830	7.0800	3-40-2091
1.7500-16 Spline							
1.7500	16	3.0000	6.7500	3.0000	.0950	5.9060	4-40-821
1.7500	16	5.0000	12.0000	3.5000	.0950	11.0300	4-40-1031
1.7500	16	3.0000	14.2190	3.5000	.0950	13.3600	4-40-981
1.7500	16	3.0000	20.7500	3.5000	.0950	19.8700	4-40-1061
1.7500	16	3.0000	6.7810	3.5000	.0950	5.8120	4-40-761
1.7500	16	3.0000	7.9380	3.5000	.0950	6.9690	4-40-741
1.7500	16	3.0000	9.2190	3.5000	.0950	8.2500	4-40-721
1.7500	16	3.0000	6.7810	3.5000	.1560	5.8120	4-40-951
1.7500	16	3.0000	6.9380	4.0000	.0830	5.8120	4-40-781
1.7500	16	3.0000	6.9380	4.0000	.1340	5.8120	4-40-991
1.7500	16	3.0000	9.5940	4.5000	.0950	8.3120	4-40-881
1.7520-26 Based On 27 Spline							
1.7520	26/27	3.5000	7.9530	4.0000	.0830	6.5310	70-40-11
1.7520	26/27	3.5000	8.7510	4.0000	.0830	7.3300	70-40-31
1.8120-28 Involute Spline							
1.8120	28 I	4.0000	9.8120	3.5000	.0950	8.9060	4-40-961
1.9370-29 Based On 30 Spline							
1.9370	29/30	4.0000	9.5900	4.0000	.0950	7.8310	100-40-31
<i>Refer to bulletin JOI-TEC-41 for important spline data</i>							
1.9370-30 Involute Spline							
1.9370	30 I	4.0000	8.2810	4.0000	.0950	7.1880	90-40-21
1.9370	30 I	4.0000	10.0940	4.0000	.1340	9.0000	90-40-11
1.9370	30 I	4.0000	8.2810	4.0000	.1340	7.1900	90-40-41
2.0000-15 Based On 16 Spline							
2.0000	15/16	3.5000	8.5620	3.5000	.0950	7.6560	5-40-491
2.0000-16 Spline							
2.0000	16	3.5000	7.5620	3.5000	.0950	6.6560	5-40-451
2.0000	16	3.5000	8.5620	3.5000	.0950	7.6250	5-40-471
2.0000	16	3.5000	9.5620	3.5000	.0950	8.6560	5-40-501
2.0000	16	3.5000	10.1880	3.5000	.1340	9.2810	5-40-1041
2.0000	16	3.5000	7.5620	3.5000	.1340	6.6560	5-40-1191
2.0000	16	4.0000	7.8440	3.5000	.1340	6.9380	4-40-891
2.0000	16	3.5000	8.5620	3.5000	.1340	7.6560	5-40-1101
2.0000	16	3.5000	8.5620	3.5000	.1340	7.6560	5-40-1151
2.0000	16	3.5000	9.6880	3.5000	.1340	8.7810	5-40-1011
2.0000	16	3.5000	8.5620	3.5000	.1560	7.6560	5-40-1121
2.0000	16	3.5000	9.5620	3.5000	.1560	8.6880	5-40-1031
2.0000	16	3.5000	7.5620	3.5500	.2070	6.6560	5-40-1241
2.0000	16	3.5000	9.8440	4.0000	.1340	8.7810	5-40-1051



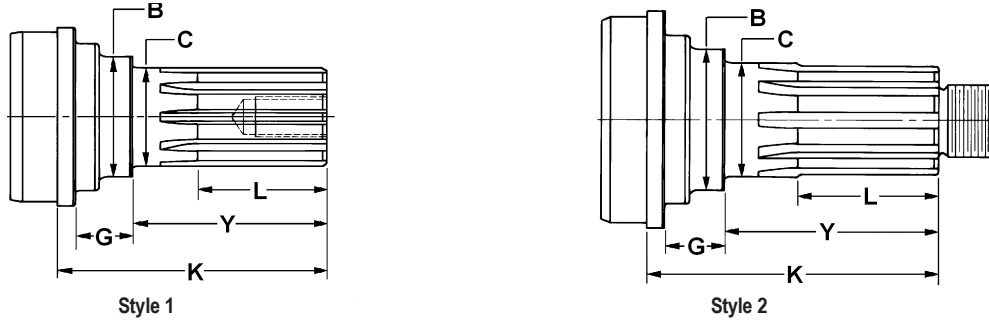
SLIP TUBE SHAFTS

SPLINE DIMENSIONS		L	K	Fits Tube		R	Spicer Part Number
Major Diameter	Number of Teeth of Spline	Length of Spline	End of Spline to Weld	Diameter	Wall Thickness	End of Spline to Radius	
2.5000-10 Spline							
2.5000	10	4.0000	10.3440	3.5000	.1560	9.5000	6-40-61
2.5000	10	4.0000	8.3440	3.5000	.1560	7.5000	6-40-51
2.5000-15 Based On 16 Spline							
2.5000	15/16	4.0000	10.5620	4.0000	.1340	9.5620	6-40-831
2.5000-16 Spline							
2.5000	16	1.5620	3.1880	3.5000	.0950	2.8750	4-40-471
2.5000	16	4.0000	9.2500	3.5000	.1560	8.3750	6-40-741
2.5000	16	4.0000	10.3440	3.5500	.2070	9.5000	6-40-701
2.5000	16	4.0000	10.5620	4.0000	.1340	9.5620	6-40-521
2.5000	16	3.5000	10.5620	4.0000	.1340	9.5620	6-40-891
2.5000	16	4.0000	13.5000	4.0000	.1340	12.5000	6-40-821
2.5000	16	4.0000	8.4380	4.0000	.1340	7.4380	6-40-711
2.5000	16	4.0000	9.2500	4.0000	.1340	8.2500	6-40-541
2.5000	16	4.0000	10.6560	4.5000	.1340	9.4690	6-40-621
2.5000	16	4.0000	9.5000	4.5000	.1340	8.3120	6-40-631
2.6720-18 Involute Spline							
2.6720	18 l	1.5000	3.5940	3.5000	.1340	3.2810	5-40-1181
							<i>Spline not Glidecoted</i>
2.6720	18 l	2.0000	3.5940	3.5500	.2070	3.2810	5-40-1341
							<i>Spline not Glidecoted</i>
3.0000-16 Spline							
3.0000	16	4.5000	10.8120	3.5500	.2070	10.0000	6.5-40-141
3.0000	16	4.5000	11.2500	4.5000	.1340	10.0310	6.5-40-191
3.0000	16	5.5000	11.2500	4.5000	.1340	10.0310	6.5-40-251
3.0000	16	4.5000	9.4690	4.5000	.1340	8.4060	6.5-40-201
3.0000	16	4.5000	11.5310	4.5000	.2590	10.2190	8-40-101
3.0000	16	4.5000	9.9060	4.5000	.2590	8.5940	8-40-91
3.2500-18 Involute Spline							
3.2500	18 l	2.0000	4.2500	3.5000	.1560	3.9060	6-40-181
							<i>Spline not Glidecoted</i>



SPLINED MIDSHIP TUBE SHAFTS

Companion Flange or End Yoke Design



Note: Butt Diameter should be .007" to .010" larger than Inside Diameter of the tube.

C Shaft Support Bearing Diameter Maximum/Minimum	L Length of Spline	K End of Spline to Point of Weld	Thread Size	S t y l e	Fits Tube		Y End of Spline to Bearing Shoulder	B Shoulder Diameter	G Length of Shoulder	Midship Tube Shaft Part Number
					Tube Dia.	Wall Thickness				
1.1250-26 Involute Spline										
1.1810 Bearing Diameter										
1.1815/1.1810	1.3750	3.4060	.625-18	2	2.5000	.0830	1.4690	1.4690	.3930	2-54-351X <i>Includes slinger</i>
1.1815/1.1810	1.3750	3.4060	.625-18	2	2.5000	.0830	1.4690	1.4690	.3930	2-54-361
1.1815/1.1810	1.3440	3.4060	.625-18	2	2.5000	.0830	2.0310	1.1880	1.1650	2-53-1331
1.1815/1.1810	1.3750	3.4060	.625-18	2	2.5000	.0830	2.0310	1.4530	.3990	2-54-371
1.1250-26 Involute Spline										
1.1815 Bearing Diameter										
1.1815/1.1810	1.5680	3.4060	.625-18	2	3.0000	.0650	2.3400	1.3440	-	2-53-1571
1.1250-26 Involute Spline										
1.1820 Bearing Diameter										
1.1815/1.1810	1.3750	3.4060	.625-18	2	2.5000	.0650	1.9060	1.1560	.4380	2-53-1321
1.1815/1.1810	1.3750	3.4060	.625-18	2	2.5000	.0650	2.0310	1.6900	.7810	2-53-1011
1.1815/1.1810	1.3750	3.4060	.625-18	2	2.5000	.0830	1.9060	1.1810	.6650	2-53-1351
1.1815/1.1810	1.3590	3.4060	.625-18	2	2.5000	.0830	2.0310	1.5000	.7500	2-53-1051
1.1815/1.1810	1.3440	3.4100	.625-18	2	3.0000	.0650	2.1250	1.6560	.7030	2-53-1161
1.1815/1.1810	1.8750	4.3000	.625-18	2	3.0000	.0650	2.4380	1.5000	1.8590	2-53-1311
1.1815/1.1810	1.3440	3.4060	.625-18	2	3.0000	.0830	2.0310	1.4530	.4000	2-53-1071
1.1820/1.1810	1.3750	3.4060	.625-18	2	2.5000	.0650	2.0310	1.6900	.7810	2-53-1021X
1.1250-26 Involute Spline										
1.2600 Bearing Diameter										
1.2602/1.2597	1.4690	3.2970	.625-18	2	2.0000	.0830	2.9840	1.6880	.7030	2-53-901
1.3750-10 Spline										
1.3780 Bearing Diameter										
1.3784/1.3779	1.7810	3.7500	1.000-20	2	2.5000	.0650	2.6880	1.6880	.8120	2-53-1211
1.3784/1.3779	1.7810	3.7500	1.000-20	2	2.5000	.0830	2.6880	1.6880	.8120	2-53-1191
1.3784/1.3779	2.0000	3.9690	.500-20	1	3.0000	.0830	2.2910	1.6880	1.0620	3-53-191
1.3784/1.3779	1.6880	4.0000	1.000-20	2	3.0000	.0830	2.6560	1.7190	1.1250	3-54-611
1.3784/1.3779	1.7810	3.7500	1.000-20	2	3.0000	.0830	2.6880	1.6880	.8120	2-53-1151
1.5000-10 Spline										
1.5750 Bearing Diameter										
1.5748/1.5743	1.9380	3.8750	1.000-20	2	3.0000	.0830	2.6500	1.8120	1.0400	3-53-2361
1.5748/1.5743	1.8120	3.8750	1.000-20	2	3.0000	.0830	2.7500	1.9380	.8750	3-53-1781
1.5748/1.5743	1.8440	4.0000	1.000-20	2	3.0000	.0830	2.9380	1.9380	.8120	3-53-1811
1.5748/1.5743	1.9380	3.8750	1.000-20	2	3.0000	.0950	2.7500	1.8120	.8750	3-53-1891
1.5748/1.5743	1.8120	3.8750	1.000-20	2	3.5000	.0650	3.6250	1.8120	.8750	3-53-2061
1.5748/1.5743	1.8120	3.8750	1.000-20	2	3.5000	.0830	2.7500	1.9380	.8750	3-53-1791
1.5748/1.5743	1.8120	3.8750	1.000-20	2	3.5000	.0830	2.7500	1.8120	.5400	3-53-2301
1.5748/1.5743	2.0000	4.0310	1.000-20	2	3.5000	.0830	2.9690	1.9380	.8120	3-53-1821
1.5748/1.5743	2.0310	4.4060	1.000-20	2	3.5000	.0830	3.0000	2.0620	1.1560	3-53-421
1.5748/1.5743	2.0000	4.0310	1.000-20	2	3.5000	.0950	2.9690	1.9380	.8120	4-53-361
1.5748/1.5743	1.9380	3.8750	1.000-20	2	4.0000	.0830	2.7500	1.8120	1.1250	3-53-1801
1.5748/1.5743	2.0000	4.0310	1.000-20	2	4.0000	.0830	2.9690	1.9380	.8120	3-53-1831



SPLINED MIDSHIP TUBE SHAFTS

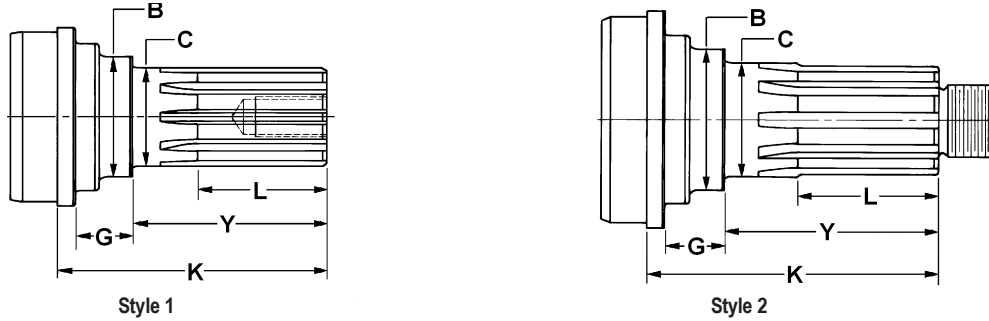
Companion Flange or End Yoke Design

C Shaft Support Bearing Diameter Maximum/Minimum	L Length of Spline	K End of Spline to Point of Weld	Thread Size	S t y l e	Fits Tube		Y End of Spline to Bearing Shoulder	B Shoulder Diameter	G Length of Shoulder	Midship Tube Shaft Part Number
					Tube Dia.	Wall Thickness				
1.5000-10 Spline										
1.7490 Bearing Diameter										
1.7495/1.7480	1.5000	5.7600	1.000-20	2	3.0000	.0830	-	-	-	3-53-1921 <i>used with pillow block</i>
1.5000-10 Spline										
1.7710 Bearing Diameter										
1.7717/1.7712	2.0000	4.0620	1.000-20	2	3.5000	.0950	2.9690	2.1900	.8100	4-53-401
1.7717/1.7712	2.0000	4.0620	1.000-20	2	4.0000	.0830	2.9690	2.1880	.8100	4-53-271
1.5000-10 Spline										
2.0000 Bearing Diameter										
2.0000/1.9980	1.9380	5.8750	1.000-20	2	3.5000	.0950	5.3750	2.5000	.2300	4-53-351 <i>used with pillow block</i>
1.5430-36 Involute Spline										
1.5740 Bearing Diameter										
1.5748/1.5743	1.9440	3.5390	1.000-20	2	4.0000	.0830	2.7400	1.8030	.5600	55-53-41
1.5620-10 Spline										
1.7718 Bearing Diameter										
1.7721/1.7716	5.9400	8.5600	0000000000	1	3.5000	.0950	7.4800	2.1900	.8100	4-53-531
1.7500-10 Spline										
1.7720 Bearing Diameter										
1.7717/1.7712	2.0620	5.0000	1.250-18	2	3.5000	.0950	3.1560	2.3750	1.5000	4-53-131
1.7717/1.7712	2.2810	4.3440	1.250-18	2	3.5000	.0950	3.2500	2.1880	.8120	5-53-111
1.7717/1.7712	2.0000	4.2810	1.250-18	2	3.5000	.1340	3.1880	2.1880	.8120	5-53-141
1.7717/1.7712	2.2810	4.3440	1.250-18	2	4.0000	.1200	3.2500	2.1880	.8120	5-53-171
1.7717/1.7712	2.2810	4.3440	1.250-18	2	4.0000	.1340	3.2500	2.1880	.8120	5-53-191
1.7500-34 Involute Spline										
1.7720 Bearing Diameter										
1.7717/1.7712	2.0620	4.2800	1.250-18	2	3.5000	.0950	3.2500	2.1880	.8120	5-53-371
1.7717/1.7712	2.0620	4.3440	1.250-18	2	3.5000	.1340	3.2500	2.1880	.8120	5-53-261
1.7717/1.7712	2.1250	4.3440	1.250-18	2	4.0000	.0950	3.2500	2.1880	.8120	90-53-31
1.7717/1.7712	2.0000	4.2190	1.250-18	2	4.0000	.1340	3.1250	2.1880	.8120	90-53-11
1.7717/1.7712	2.1250	4.3440	1.250-18	2	4.0000	.1340	3.2500	2.1880	.8120	5-53-271
1.9500-38 Involute Spline										
1.9680 Bearing Diameter										
1.9685/1.9679	2.1250	4.5910	M30X6G	2	4.5660	.1570	3.3460	2.4410	.8110	140-53-41
1.9685/1.9680	2.8440	5.1560	1.250-18	2	4.5620	.1650	4.0620	2.4380	.8120	6-53-421
<i>Spline has helix on tooth. End yokes will be a tight fit.</i>										
1.9500-38 Involute Spline										
1.9690 Bearing Diameter										
1.9685/1.9679	2.6180	5.0550	M30X6G	2	4.5670	.1570	3.8110	2.4410	.8110	140-53-31
1.9685/1.9678	2.6200	5.0551	M30X6G	2	4.3300	.1970	3.8110	2.4409	.8110	140-53-11
1.9530-38 Involute Spline										
1.9680 Bearing Diameter										
1.9685/1.9680	2.8440	5.1560	1.250-18	2	4.0000	.1340	4.0620	2.4380	.8120	6-53-411
<i>Spline has helix on tooth. End yokes will be a tight fit.</i>										
1.9580-10 Spline										
1.9680 Bearing Diameter										
1.9678/1.9672	1.9380	4.4380	1.250-18	2	4.0000	.1340	3.0000	2.6250	1.0620	6-53-211
1.9685/1.9680	3.0000	5.1560	1.250-18	2	3.5000	.1560	4.0620	2.4380	.8120	6-53-151
1.9685/1.9680	2.8750	5.1560	1.250-18	2	4.0000	.1340	4.0620	2.4380	.8120	6-53-201
1.9685/1.9680	2.8750	5.1560	1.250-18	2	4.5000	.1340	4.0620	2.4380	.8120	6-53-241



SPLINED MIDSHIP TUBE SHAFTS

Companion Flange or End Yoke Design



Note: Butt Diameter should be .007" to .010" larger than Inside Diameter of the tube.

C Shaft Support Bearing Diameter Maximum/Minimum	L Length of Spline	K End of Spline to Point of Weld	Thread Size	S t y l e	Fits Tube		Y End of Spline to Bearing Shoulder	B Shoulder Diameter	G Length of Shoulder	Midship Tube Shaft Part Number
					Tube Dia.	Wall Thickness				
1.9830-31 Involute Spline										
2.3630 Bearing Diameter										
2.3631/2.3626	2.1410	7.4060	.500-20	2	3.5000	.1340	4.4840	2.7740	1.2810	4-53-331
1.9830-31 Involute Spline										
2.4380 Bearing Diameter										
2.4372/2.4363	1.8590	8.5620	1.750-6H	1	3.5000	.1340	7.5310	-	4.7190	4-53-501
2.0000-10 Spline										
2.1650 Bearing Diameter										
2.1653/2.1643	2.8750	6.8440	1.250-18	2	4.0000	.1340	4.2500	2.9380	1.8750	6-53-331
2.1654/2.1646	2.6250	7.8750	1.250-18	2	4.0000	.1340	4.5620	2.5620	2.9380	6-53-261
2.2500-10 Spline										
2.3620 Bearing Diameter										
2.3615/2.3608	2.5620	5.2810	1.250-18	2	4.5000	.2590	3.7500	2.8750	1.1560	8-53-41
2.3500-16 Spline										
2.3620 Bearing Diameter										
2.3622/2.3617	2.6250	5.3120	1.250-18	2	4.0000	.1340	4.0000	2.8750	.8120	6-53-311
2.3622/2.3617	2.7500	5.3120	1.250-18	2	4.5000	.1340	4.0000	2.8750	1.3120	6.5-53-91
2.3500-46 Involute Spline										
2.3620 Bearing Diameter										
2.3622/2.3617	2.6180	5.2910	M30X6G	2	5.1970	.2360	3.9800	2.8860	.8120	250-53-11 <i>Spline has helix on tooth. End yokes will be a tight fit.</i>
2.3622/2.3617	2.6180	5.3110	M30X6G		4.3300	.1970	4.0000	2.8860	.8110	140-53-21
2.3622/2.3617	2.6250	5.3120	1.250-18	2	4.0620	.1650	4.0000	2.8750	.8120	6.3-53-21 <i>Spline has helix on tooth. End yokes will be a tight fit.</i>
2.3622/2.3617	2.6250	5.3120	1.250-18	2	4.5000	.2590	4.0000	2.8750	.8120	6.5-53-181 <i>Spline has helix on tooth. End yokes will be a tight fit.</i>
2.3622/2.3617	2.6250	5.3120	1.250-18	2	4.5620	.1650	4.0000	2.8750	.8120	6.5-53-171 <i>Spline has helix on tooth. End yokes will be a tight fit.</i>
2.3500-46 Involute Spline										
2.5598 Bearing Diameter										
2.5601/2.5596	2.4800	7.0700	.500-20	1	4.0000	.1340	4.8200	3.1250	1.8900	6-53-481
2.3500-46 Involute Spline										
2.9530 Bearing Diameter										
2.9525/2.9516	2.5310	8.1560	1.750-6H	1	4.0000	.1340	7.4800	2.9510	4.3200	5-53-341 <i>.364 key width in shoulder, Metric thread</i>
2.3590-16 Spline										
2.3620 Bearing Diameter										
2.3622/2.3617	2.7500	5.4380	1.250-18	2	4.5000	.2590	4.0000	2.8750	.8120	6.5-53-51



SPLINED MIDSHIP TUBE SHAFTS

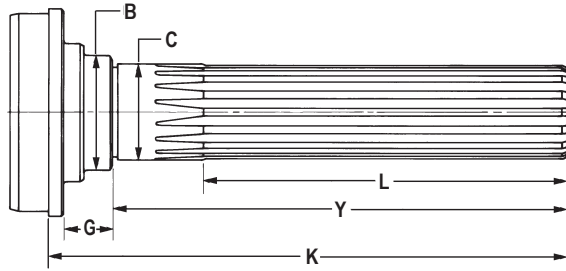
Companion Flange or End Yoke Design

C Shaft Support Bearing Diameter Maximum/Minimum	L Length of Spline	K End of Spline to Point of Weld	Thread Size	S t y l e	Fits Tube		Y	B	G	Midship Tube Shaft Part Number
					Tube Dia.	Wall Thickness	End of Spline to Bearing Shoulder	Shoulder Diameter	Length of Shoulder	
2.3590-46 Involute Spline										
2.5600 Bearing Diameter										
2.5601/2.5596	2.4690	7.0000	.500-20	1	3.5000	.1340	6.7030	3.1250	1.2340	4-53-301
2.5601/2.5596	2.8120	7.4060	.500-20	1	4.0950	.1800	5.1560	3.1250	1.3120	6-53-351
2.3600-16 Spline										
2.3620 Bearing Diameter										
2.3616/2.3609	3.0000	7.5620	1.250-18	2	4.0000	.1340	4.6880	3.0000	1.1880	6-53-271
2.5000-10 Spline										
2.5590 Bearing Diameter										
2.5591/2.5584	2.9380	7.0000	1.500-18	2	4.5000	.1340	6.2810	3.5000	1.5000	6.5-53-111
2.6560-18 Involute Spline										
2.7560 Bearing Diameter										
2.7564/2.7558	2.8750	6.0000	1.500-18	2	4.5000	.2590	4.5620	3.3120	.8120	8-53-61

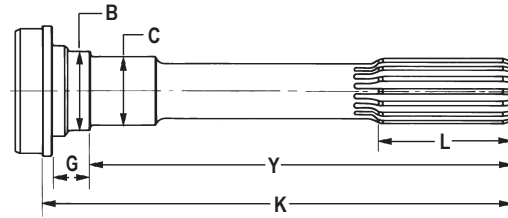


SPLINED MIDSHIP TUBE SHAFTS

Slip Yoke Design For Use with Outboard Slip Yokes



Style 1



Style 2

Note: Spline is Glidecote except where footnoted.

Note: Butt Diameter should be .007" to .010" larger than Inside Diameter of the tube.

C Shaft Support Bearing Diameter Spline Maximum/Minimum	L Length of To Point	K End of Spline Of Weld	S t y e	Fits Tube		Y End of Spline to Diameter Shoulder	B Shoulder Shoulder	G Length of Part	Midship Tube Shaft Number
				Wall Diameter	Bearing Thickness				
1.3750-15 Based On 16 Spline									
1.3780 Bearing Diameter									
1.3784/1.3779	2.5000	8.4690	2	2.5000	.0830	7.4060	1.6880	.8120	2-53-921
1.3784/1.3779	2.5000	8.8750	2	2.5000	.0830	7.8120	1.6880	.8120	2-53-681
1.3784/1.3779	2.5000	8.8750	2	3.0000	.0650	7.8120	1.6880	.8120	2-53-691
1.3784/1.3779	3.0000	8.7500	2	3.0000	.0830	6.9690	1.6880	.1600	2-53-1371
1.3784/1.3779	2.5000	9.0310	2	3.0000	.0830	7.9690	1.6880	.8120	2-53-711
1.3750-16 Spline									
1.3780 Bearing Diameter									
1.3750/1.3745	4.9690	9.3440	1	2.5000	.0650	8.5310	1.7500	.5000	2-53-171
1.3784/1.3779	4.4380	7.2810	1	2.0000	.0830	5.9690	1.6880	.8120	2-53-121
1.3784/1.3779	5.4060	8.2500	1	2.0000	.0830	6.9380	1.6880	.8120	2-53-511
1.3784/1.3779	5.4060	8.0000	1	2.5000	.0650	6.9380	1.6880	.8120	2-53-531
1.3784/1.3779	4.4380	7.0310	1	2.5000	.0830	5.9690	1.6880	.8120	3-53-211
1.3784/1.3779	4.9690	8.0940	1	2.5000	.0830	6.7500	1.7190	1.1250	3-53-1351
1.3784/1.3779	5.4060	8.0000	1	2.5000	.0830	6.9380	1.6880	.8120	2-53-471
1.3784/1.3779	5.4060	8.0000	1	3.0000	.0650	6.9380	1.6880	.8120	2-53-491
1.3784/1.3779	4.9690	8.0940	1	3.0000	.0830	6.7500	1.7190	1.1250	3-53-1361
1.3784/1.3779	4.4380	7.0310	1	3.0000	.0830	6.7810	1.6880	.8120	3-53-1371
1.3784/1.3779	5.4060	8.0000	1	3.0000	.0830	6.9380	1.6880	.8120	2-53-501
1.3784/1.3779	2.5000	8.9080	2	3.0000	.0830	7.8480	1.6880	.8120	2-53-1131
1.3784/1.3779	4.4400	7.0300	2	3.5000	.0650	5.9690	1.6880	.8120	3-53-181
1.3784/1.3779	4.9690	8.0940	1	3.5000	.0650	6.7500	1.7190	1.1250	3-53-1381
1.3784/1.3779	4.4380	7.0310	1	4.0000	.0830	6.7810	1.6880	.8120	3-53-1391
1.3750-31 Based On 32 Spline									
1.3780 Bearing Diameter									
1.3784/1.3779	3.3440	8.8120	2	3.0000	.0830	7.4690	1.7190	1.1250	3-53-1181
1.3784/1.3779	3.3440	8.8120	2	3.5000	.0830	7.4690	1.7190	1.1250	3-53-1301
<i>Spline not Glidecoted</i>									
1.3760-31 Based On 32 Spline									
1.3780 Bearing Diameter									
1.3784/1.3779	3.3440	8.8120	2	2.7500	.0650	7.4690	1.7190	1.1250	3-53-1991
1.4370-21 Based On 22 Spline									
1.5750 Bearing Diameter									
1.5752/1.5747	3.5000	10.0620	2	3.0000	.0830	8.9380	1.8100	.8800	3-53-2451
1.5752/1.5747	3.5000	8.0000	2	3.5000	.0650	7.3850	1.8120	.3750	3-53-2381
1.5752/1.5747	3.5000	8.0800	2	3.5000	.0830	7.7150	1.8000	.3750	3-53-2441
1.5000-15 Based On 16 Spline									
1.5750 Bearing Diameter									
1.5752/1.5747	3.0000	9.3750	2	3.0000	.0830	8.2400	1.8120	.8120	3-53-1551
1.5752/1.5747	3.0000	9.5000	2	3.0000	.0830	8.3800	1.8100	.8750	3-53-1951
1.5752/1.5747	3.0000	9.3500	2	3.0000	.0950	8.2340	1.8120	.8750	3-53-2291
1.5752/1.5747	3.0000	9.3500	2	3.5000	.0650	8.2300	1.8100	.8750	3-53-2011
1.5752/1.5747	3.0000	10.7190	2	3.5000	.0830	9.6250	1.8100	.8750	3-53-2281
1.5752/1.5747	3.0000	10.6250	2	4.0000	.0830	9.5000	1.8100	.8750	3-53-2181
1.5752/1.5747	3.0000	10.6250	2	4.0950	.1800	9.5000	1.8100	.8750	3-53-1981



SPLINED MIDSHIP TUBE SHAFTS

Slip Yoke Design For Use with Outboard Slip Yokes

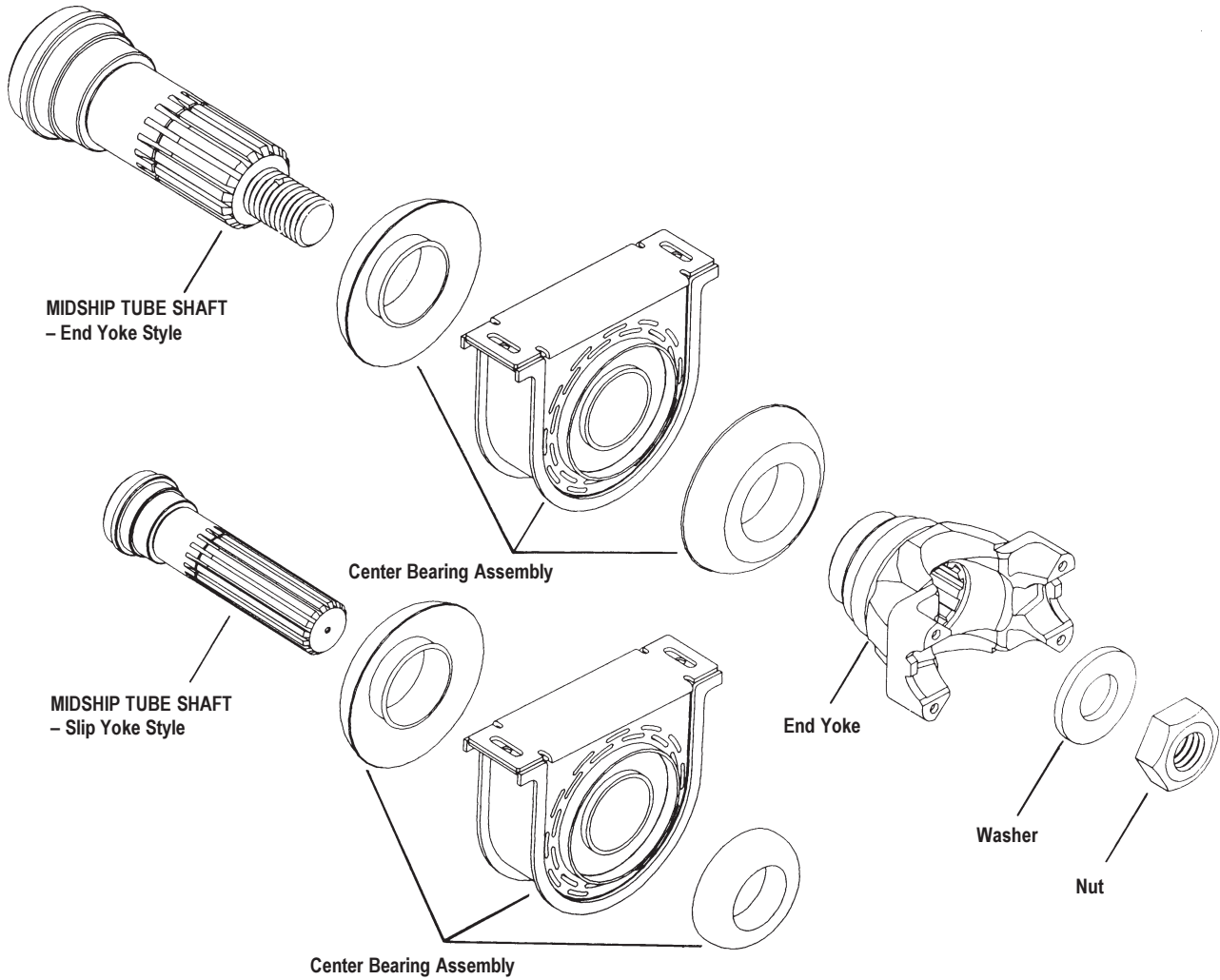


C Shaft Support Bearing Diameter Spline Maximum/Minimum	L Length of To Point	K End of Spline I Of Weld	S t y e	Fits Tube		Y End of Spline to Diameter Shoulder	B Shoulder Shoulder	G Length of Part	Midship Tube Shaft Number
				Wall Diameter	Bearing Thickness				
1.5000-16 Spline									
1.5750 Bearing Diameter									
1.5725/1.5747	4.4380	7.0620	1	3.0000	.0830	5.9400	1.8100	.8750	3-53-1031
1.5752/1.5747	5.6880	8.3120	1	3.0000	.0830	7.1880	1.8100	.8750	3-53-1041
1.5752/1.5747	6.5800	9.2000	1	3.0000	.0830	8.0800	1.8100	.8750	3-53-1531
1.5752/1.5747	7.5400	10.1600	1	3.0000	.0830	9.0400	1.8100	.8750	3-53-1481
1.5752/1.5747	4.4400	7.0620	1	3.0000	.0950	5.9400	1.8100	.8750	3-53-1561
1.5752/1.5747	4.4400	7.0620	1	3.5000	.0830	5.9400	1.8100	.8750	3-53-1121
1.5752/1.5747	4.4380	7.0620	1	4.0000	.0830	5.9400	1.8100	.8750	3-53-1131
1.5620-16 Spline									
1.5750 Bearing Diameter									
1.5725/1.5747	5.9060	8.5310	1	4.0000	.0830	7.4100	1.8100	.8750	3-53-1211
1.5752/1.5747	5.9400	8.5310	1	3.0000	.0830	7.4700	1.9400	.8750	3-53-411
1.5752/1.5747	5.9060	8.5310	1	3.5000	.0830	7.4100	1.8100	.8750	3-53-1311
1.5752/1.5747	5.9380	8.5310	1	3.5000	.0830	7.4700	1.9400	.8120	3-53-451
1.5752/1.5747	5.9380	9.2900	1	3.5000	.0830	7.8800	2.0600	1.1560	3-53-441
1.5752/1.5747	5.9380	8.5310	1	4.0000	.0830	7.4700	1.9400	.8120	3-53-1191
1.5620-23 Based On 24 Spline									
1.5750 Bearing Diameter									
1.5752/1.5747	3.0000	9.8750	1	3.5000	.0830	8.7500	1.8120	.8750	3-53-2571
1.5620-23 Based On 24 Spline									
1.5751 Bearing Diameter									
1.5751/1.5747	3.5000	8.3310	1	3.5000	.0830	7.5310	1.8030	.3220	55-53-11
									<i>Refer to bulletin JOI-TEC-41 for important spline data</i>
1.5751/1.5747	3.5000	9.5000	1	3.5000	.0830	8.7040	1.8030	.3220	55-53-51
									<i>Refer to bulletin JOI-TEC-41 for important spline data</i>
1.5751/1.5747	3.5000	8.3310	1	4.0000	.0830	7.5310	1.8030	.3220	55-53-21
									<i>Refer to bulletin JOI-TEC-41 for important spline data</i>
1.5751/1.5747	3.5000	9.5000	1	4.0000	.0830	8.7040	1.8030	.3220	55-53-31
									<i>Refer to bulletin JOI-TEC-41 for important spline data</i>
1.7500-16 Spline									
1.7720 Bearing Diameter									
1.7721/1.7715	5.9380	8.5620	1	3.5000	.0950	7.4690	2.1880	.8120	4-53-61
1.7721/1.7716	5.9380	9.8120	1	3.5000	.0950	7.9380	2.3750	1.5000	4-53-111
1.7721/1.7716	5.9380	8.5620	1	4.0000	.0830	7.4690	2.1880	.8120	4-53-101
1.7500-34 Spline									
2.1860 Bearing Diameter									
2.1857/2.1850	2.0310	7.0000	2	3.5000	.1340	6.2030	-	3.8750	5-53-331
1.7520-26 Based On 27 Spline									
1.7720 Bearing Diameter									
1.7720/1.7716	3.5000	8.9020	2	4.0000	.0830	8.1020	2.1540	.5540	70-53-11
									<i>Refer to bulletin JOI-TEC-41 for important spline data</i>
1.7720/1.7716	3.5000	9.6930	2	4.0000	.0830	8.9020	2.1540	.5540	70-53-21
									<i>Refer to bulletin JOI-TEC-41 for important spline data</i>
1.7520-26 Based On 27 Spline									
1.7720 Bearing Diameter									
1.7720/1.7716	3.5000	9.6930	2	3.5000	.0950	8.9020	2.1540	.5540	70-53-51
									<i>Refer to bulletin JOI-TEC-41 for important spline data</i>
1.9370-29 Based On 30 Spline									
1.9690 Bearing Diameter									
1.9685/1.9680	4.0000	10.6610	2	4.0000	.0950	9.5200	2.4410	.3540	100-53-21
									<i>Refer to bulletin JOI-TEC-41 for important spline data</i>
1.9370-30 Involute Spline									
1.9690 Bearing Diameter									
1.9685/1.9680	4.0000	10.0000	2	4.0000	.0950	8.9060	2.4380	.8120	90-53-21
									<i>Mates with 90-3-41X</i>
1.9685/1.9680	4.0000	10.0000	2	4.0000	.1340	8.9060	2.4380	.8120	90-53-41
2.5000-16 Spline									
2.7500 Bearing Diameter									
2.7490/2.7480	5.0000	9.4400	1	4.0950	.1800	8.6200	3.1200	-	6-40-851
									<i>used with pillow block</i>



Important: See Safety Information in General Information Section (J300P-GI)

Exploded View



Tube Shaft Part Number	Center Bearing Number	End Yoke/ Flange Number	Series	Washer	Lockwasher	Nut	Bolt	Cotter Pin
100-53-21	212142-1X	-	-	-	-	-	-	-
100-53-21	212153-1X	-	-	-	-	-	-	-
140-53-11	210121-1X	140-4-11-1	SPL140	230123-6	-	250-74-11	-	-
140-53-11	210881-1X	140-4-11-1	SPL140	230123-6	-	250-74-11	-	-
140-53-11	212156-1X	140-4-11-1	SPL140	230123-6	-	250-74-11	-	-
140-53-21	210661-1X	140-4-1011-1	SPL140	230123-6	-	250-74-11	-	-
140-53-21	210875-1X	140-4-1011-1	SPL140	230123-6	-	250-74-11	-	-
140-53-31	210121-1X	140-4-11-1	SPL140	230123-6	-	250-74-11	-	-
140-53-41	210121-1X	140-1-15	SPL140	230123-6	-	250-74-11	-	-
140-53-41	210881-1X	140-1-15	SPL140	230123-6	-	250-74-11	-	-
140-53-41	210881-1X	140-1-25	SPL140	230123-6	-	250-74-11	-	-
250-53-11	210661-1X	170-4-1271-1	SPL170	230123-6	-	250-74-11	-	-
250-53-11	210661-1X	250-1-15	SPL250	230123-6	-	250-74-11	-	-
250-53-11	210661-1X	250-4-21-1	SPL250	230123-6	-	250-74-11	-	-
250-53-11	210661-1X	250-4-21-1	SPL250	230123-6	-	250-74-11	-	-
250-53-11	210875-1X	250-1-11	SPL250	230123-6	-	250-74-11	-	-
250-53-11	210875-1X	250-1-15	SPL250	230123-6	-	250-74-11	-	-
250-53-11	210875-1X	250-4-21-1	SPL250	230123-6	-	250-74-11	-	-
250-53-11	212066-1X	250-4-21-1	SPL250	230123-6	-	250-74-11	-	-
2-53-1011	211590-1X	2-4-7021-1	1310	230123-12	-	231781	-	-
2-53-1021X	211590-1X	2-4-7021-1	1310	230123-12	-	231781	-	-
2-53-1051	211574-1X	2-4-7201-1X	1310	230123-12	-	231781	-	-
2-53-1051	211589-1X	2-4-7291-1X	1310	230123-12	-	231781	-	-
2-53-1051	211938-1X	2-4-7291-1X	1310	230123-12	-	231781	-	-
2-53-1061X	211574-1X	2-4-7291-1X	1310	230123-12	-	231781	-	-
2-53-1071	211502X	2-4-6411-1X	1210	230123-12	-	231781	-	-
2-53-1081X	211502X	2-4-6411-1X	1310	230123-12	-	231781	-	-
2-53-1121	211618X	2-4-7281-1X	1310	230123-12	-	231781	-	-
2-53-1131	211579-1X	-	-	-	-	-	-	-
2-53-1141X	211589-1X	2-4-7291-1X	1310	230123-12	-	231781	-	-
2-53-1141X	211938-1X	2-4-7291-1X	1310	230123-12	-	231781	-	-
2-53-1151	210090-1X	281638	1310	-	-	16-74-101	-	-
2-53-1151	210090-1X	2-4-2671-1	1310	-	-	16-74-101	-	-
2-53-1171X	211406X	2-4-7501-1X	1310	230123-12	-	231781	-	-
2-53-1191	210090-1X	281638	1310	-	-	16-74-101	-	-
2-53-1191	210090-1X	2-4-2671-1	1310	-	-	16-74-101	-	-
2-53-1191	211134X	281638	1310	-	-	16-74-101	-	-
2-53-1191	211134X	2-4-2671-1	1330	-	-	16-74-101	-	-
2-53-1191	211161X	792978	1310	-	-	16-74-101	-	-
2-53-1191	211173X	1377366	1330	-	-	16-74-101	-	-
2-53-1191	211569-1X	2-4-2671-1	1310	-	-	16-74-101	-	-
2-53-121	210088-1X	-	-	-	-	-	-	-
2-53-1211	210090-1X	281638	1310	-	-	16-74-101	-	-
2-53-1211	210090-1X	2-4-2671-1	1310	-	-	16-74-101	-	-
2-53-1211	211757-1X	281638	1310	-	-	16-74-101	-	-
2-53-1271X	211747-1X	2-4-7571-1X	1310	230123-12	-	231781	-	-
2-53-1311	211750-1X	2-4-7561x	1310	230123-14	-	10-74-101	-	-
2-53-1321	211872-1X	2-4-7021-1	1310	230123-12	-	231781	-	-
2-53-1331	211590-1X	2-4-7021-1	1310	230123-12	-	231781	-	-
2-53-1351	211872-1X	2-4-7021-1	1310	230123-12	-	231781	-	-
2-53-1351	211872-1X	2122460	1310	230123-12	-	231781	-	-
2-53-1371	211925-1X	-	-	-	-	-	-	-
2-53-1371	211986-1X	-	-	-	-	-	-	-
2-53-1571	212165-1X	2-4-8541-1X	1310	230123-14	-	231781	-	-
2-53-1571	212166-1X	2-4-8541-1X	1310	230123-14	-	231781	-	-

Note: For detail information on Center Bearings, refer to J300P-9A.



Important: See Safety Information in General Information Section (J300P-GI)

Tube Shaft Part Number	Center Bearing Number	End Yoke/ Flange Number	Series	Washer	Lockwasher	Nut	Bolt	Cotter Pin
2-53-331	210090-1X	281638	1310	230123-11	-	-	500412-11	-
2-53-361	210090-1X	281638	1310	230123-11	-	-	500412-11	-
2-53-381X	211341X	2-4-6411-1X	1310	230123-12	-	231781	-	-
2-53-471	211175X	-	-	-	-	-	-	-
2-53-491	211175X	-	-	-	-	-	-	-
2-53-501	210088-1X	-	-	-	-	-	-	-
2-53-501	211175X	-	-	-	-	-	-	-
2-53-511	211175X	-	-	-	-	-	-	-
2-53-531	211175X	-	-	-	-	-	-	-
2-53-681	211175X	-	-	-	-	-	-	-
2-53-691	211175X	-	-	-	-	-	-	-
2-53-711	211130X	-	-	-	-	-	-	-
2-53-711	211131X	-	-	-	-	-	-	-
2-53-711	211175X	-	-	-	-	-	-	-
2-53-901	211431X	1567292	1210	230123-12	-	231781	-	-
2-53-901	211431X	2-4-6191-1	1210	230123-12	-	231781	-	-
2-53-901	211748-1X	2-4-6731-1X	1210	230123-12	-	231781	-	-
2-53-921	211415X	-	-	-	-	-	-	-
2-53-991	211478-1X	2-4-6731-1X	1210	230123-12	-	231781	-	-
2-54-351X	211406X	2-4-6181-1X	1310	230123-12	-	231781	-	-
2-54-351X	211406X	2-4-7501-1X	1310	230123-12	-	231781	-	-
2-54-361	211406X	2-4-6181-1X	1310	230123-12	-	231781	-	-
2-54-361	211406X	2-4-7501-1X	1310	230123-12	-	231781	-	-
2-54-371	211502X	2-4-8211-1X	1310	230123-12	-	231781	-	-
2-54-381X	211505X	2-4-6411-1X	1310	230123-12	-	231781	-	-
3-53-1031	210866-1X	-	-	-	-	-	-	-
3-53-1041	210866-1X	-	-	-	-	-	-	-
3-53-1121	210866-1X	-	-	-	-	-	-	-
3-53-1131	210866-1X	-	-	-	-	-	-	-
3-53-1181	210370-1X	-	-	-	-	-	-	-
3-53-1191	210088-1X	-	-	-	-	-	-	-
3-53-1191	210391-1X	-	-	-	-	-	-	-
3-53-1191	210433-1X	-	-	-	-	-	-	-
3-53-1211	210866-1X	-	-	-	-	-	-	-
3-53-1301	210370-1X	-	-	-	-	-	-	-
3-53-1311	210866-1X	-	-	-	-	-	-	-
3-53-1351	210370-1X	-	-	-	-	-	-	-
3-53-1361	210370-1X	-	-	-	-	-	-	-
3-53-1391	210088-1X	-	-	-	-	-	-	-
3-53-1391	211200X	-	-	-	-	-	-	-
3-53-1481	210866-1X	-	-	-	-	-	-	-
3-53-1531	210866-1X	-	-	-	-	-	-	-
3-53-1551	211359X	-	-	-	-	-	-	-
3-53-1551	211499-1X	-	-	-	-	-	-	-
3-53-1551	211793-1X	-	-	-	-	-	-	-
3-53-1561	210866-1X	-	-	-	-	-	-	-
3-53-1781	210873-1X	924490	1410	-	-	16-74-101	-	-
3-53-1781	210873-1X	1702460	1410	-	-	16-74-101	-	-
3-53-1781	210873-1X	3-4-6561-1	1410	-	-	16-74-101	-	-
3-53-1781	210873-1X	3-4-6631X	1410	-	-	16-74-101	-	-
3-53-1791	210873-1X	924490	1410	-	-	16-74-101	-	-
3-53-1791	210873-1X	1702460	1410	-	-	16-74-101	-	-
3-53-1791	210873-1X	3-4-6561-1	1410	-	-	16-74-101	-	-
3-53-1791	210873-1X	3-4-6631X	1410	-	-	16-74-101	-	-
3-53-1791	210873-1X	1826642	1410	-	-	16-74-101	-	-

Note: For detail information on Center Bearings, refer to J300P-9A.



COUPLING SHAFT COMPONENTS

Tube Shaft Part Number	Center Bearing Number	End Yoke/ Flange Number	Series	Washer	Lockwasher	Nut	Bolt	Cotter Pin
3-53-1801	210873-1X	1702460	1410	-	-	16-74-101	-	-
3-53-1801	210873-1X	3-4-6561-1	1410	-	-	16-74-101	-	-
3-53-1801	210873-1X	3-4-6561-2	1410	-	-	16-74-101	-	-
3-53-1801	210873-1X	1826642	1480	-	-	16-74-101	-	-
3-53-1801	210873-1X	3-4-6901-1	1480	-	-	16-74-101	-	-
3-53-181	210088-1X	-	-	-	-	-	-	-
3-53-1811	210391-1X	380282	1410	-	-	16-74-101	-	-
3-53-1821	210391-1X	55188	1550	-	-	16-74-101	-	-
3-53-1821	210391-1X	380282	1410	-	-	16-74-101	-	-
3-53-1821	210391-1X	435068	1550	-	-	16-74-101	-	-
3-53-1821	210391-1X	3-4-4421X	1480	-	-	16-74-101	-	-
3-53-1821	210391-1X	931826	1550	-	-	16-74-101	-	-
3-53-1831	210391-1X	380282	1410	-	-	16-74-101	-	-
3-53-1831	210391-1X	3-4-4421X	1480	-	-	16-74-101	-	-
3-53-1831	210391-1X	931826	1550	-	-	16-74-101	-	-
3-53-1831	210391-1X	55247	1550	-	-	16-74-101	-	-
3-53-1881	210391-1X	997538	1410	-	-	16-74-101	-	-
3-53-1891	210873-1X	1702460	1410	-	-	16-74-101	-	-
3-53-1891	210873-1X	3-4-6561-1	1410	-	-	16-74-101	-	-
3-53-1891	210873-1X	3-4-6561-2	1410	-	-	16-74-101	-	-
3-53-1891	210873-1X	3-4-6631X	1410	-	-	16-74-101	-	-
3-53-1921	211453X	3-4-10551-1	1410	98-216	-	16-74-11	-	500024-11
3-53-1951	211359X	-	-	-	-	-	-	-
3-53-1951	211359X	-	-	-	-	-	-	-
3-53-1951	211499X	-	-	-	-	-	-	-
3-53-1951	211499X	-	-	-	-	-	-	-
3-53-1951	211793-1X	-	-	-	-	-	-	-
3-53-1951	211848-1X	-	-	-	-	-	-	-
3-53-1951	211963-1X	-	-	-	-	-	-	-
3-53-1981	211359X	-	-	-	-	-	-	-
3-53-2011	211793-1X	-	-	-	-	-	-	-
3-53-2061	210873-1X	3-4-11451-1	-	-	-	16-74-101	-	-
3-53-2061	210873-1X	1702460	-	-	-	16-74-101	-	-
3-53-2061	210873-1X	3-4-6561-1	-	-	-	16-74-101	-	-
3-53-2061	210873-1X	3-4-6561-2	-	-	-	16-74-101	-	-
3-53-211	211175X	-	-	-	-	-	-	-
3-53-2171	232429	3-4-12271-1M	1480	232430	-	-	232431	-
3-53-2181	211848-1X	-	-	-	-	-	-	-
3-53-2181	211963-1X	-	-	-	-	-	-	-
3-53-2281	211359X	-	-	-	-	-	-	-
3-53-2281	211499X	-	-	-	-	-	-	-
3-53-2281	211848-1X	-	-	-	-	-	-	-
3-53-2281	211963-1X	-	-	-	-	-	-	-
3-53-2281	212093-2X	-	-	-	-	-	-	-
3-53-2291	211793-2X	-	-	-	-	-	-	-
3-53-2301	211966-1X	3-4-7391-1X	1480	-	-	16-74-101	-	-
3-53-2301	212053-1X	3-4-13921-1	1480	-	-	16-74-101	-	-
3-53-2301	212053-1X	3-4-13871-1	1410	-	-	16-74-101	-	-
3-53-2301	212053-1X	3-4-13881-1	1350	-	-	16-74-101	-	-
3-53-2331	211359X	-	-	-	-	-	-	-
3-53-2331	211499X	-	-	-	-	-	-	-
3-53-2331	211793-1X	-	-	-	-	-	-	-
3-53-2351	210433-1X	-	-	-	-	-	-	-
3-53-2361	212004-1X	3-4-13721-1X	1410	-	-	16-74-101	-	-
3-53-2381	212028-1X	-	-	-	-	-	-	-

Note: For detail information on Center Bearings, refer to J300P-9A.



Important: See Safety Information in General Information Section (J300P-GI)

Tube Shaft Part No.	Center Bearing Number	End Yoke/ Flange Number	Series	Washer	Lockwasher	Nut	Bolt	Cotter Pin
3-53-2381	212030-1X	-	-	-	-	-	-	-
3-53-2381	212031-1X	-	-	-	-	-	-	-
3-53-2381	212032-1X	-	-	-	-	-	-	-
3-53-2441	212030-1X	-	-	-	-	-	-	-
3-53-2441	212031-1X	-	-	-	-	-	-	-
3-53-2441	212177-1X	-	-	-	-	-	-	-
3-53-2451	211359X	-	-	-	-	-	-	-
3-53-2451	211499X	-	-	-	-	-	-	-
3-53-2451	212020-1X	-	-	-	-	-	-	-
3-53-2471	211359X	-	-	-	-	-	-	-
3-53-2571	211499X	-	-	-	-	-	-	-
3-53-411	210433-1X	-	-	-	-	-	-	-
3-53-421	210119-1X	3-4-3331X	1480	-	-	16-74-101	-	-
3-53-421	210119-1X	47942	1550	-	-	16-74-101	-	-
3-53-421	210144-1X	3-4-3331X	1480	-	-	16-74-101	-	-
3-53-441	210140-1X	-	-	-	-	-	-	-
3-53-451	210433-1X	-	-	-	-	-	-	-
3-54-611	210367-1X	3-4-178-1X	1350	-	-	16-74-101	-	-
3-54-611	210367-1X	3-4-2851X	1410	-	-	16-74-101	-	-
3-54-611	210367-2X	3-4-178-1X	1350	-	-	16-74-101	-	-
4-53-101	210084-2X	-	-	-	-	-	-	-
4-53-101	210207-1X	-	-	-	-	-	-	-
4-53-111	210209-1X	1497982	-	-	-	-	-	-
4-53-131	NO DATA	-	-	-	-	-	-	-
4-53-261	210084-2X	844170	1550	-	-	16-74-101	-	-
4-53-261	210084-2X	4-4-4211-1	1550	-	-	16-74-101	-	-
4-53-271	210084-2X	844170	1550	-	-	16-74-101	-	-
4-53-271	210084-2X	4-4-4211-1	1550	-	-	16-74-101	-	-
4-53-301	-	1899721	1550	-	-	-	-	-
4-53-341	210084-2X	4-4-6031-1	1550	-	-	231502	-	-
4-53-361	210391-1X	931826	1550	-	-	16-74-101	-	-
4-53-361	210391-1X	4-4-2051-1	1550	-	-	16-74-101	-	-
4-53-401	210084-2X	844170	1550	-	-	16-74-101	-	-
4-53-401	210084-2X	4-4-4211-1	1550	-	-	16-74-101	-	-
4-53-401	210084-2X	4-4-4211-2	1550	-	-	16-74-101	-	-
4-53-461	4-4-2051-1	-	-	-	-	-	-	-
4-53-501	232373	4-4-7101-1M	1550	-	-	-	-	-
4-53-531	210207-1X	-	1480	-	-	-	-	-
4-53-61	210084-2X	-	-	-	-	-	-	-
4-53-61	210207-1X	-	-	-	-	-	-	-
4-53-91	211118X	47942	1550	-	-	16-74-101	-	-
4-53-91	211118X	47942	1550	-	-	16-74-101	-	-
5-53-111	210084-2X	1497982	1610	-	-	16-74-101	-	-
5-53-111	210084-2X	5-4-1721	1610	-	-	16-74-101	-	-
5-53-131	210084-2X	5-4-1721	1610	-	-	16-74-101	-	-
5-53-141	210084-2X	1497982	1610	-	-	231502	-	-
5-53-141	210084-2X	5-4-1721	1610	-	-	231502	-	-
5-53-141	210084-2X	5-4-1721-1	1610	-	-	231502	-	-
5-53-141	210084-2X	77191	1650	-	-	231502	-	-
5-53-171	NO DATA	-	-	-	-	-	-	-
5-53-191	210084-2X	1497982	1610	-	-	231502	-	-
5-53-191	210084-2X	5-4-1721	1610	-	-	231502	-	-
5-53-191	210084-2X	5-4-1721-1	1610	-	-	231502	-	-
5-53-231	210121-1X	1030474	1610	-	-	231502	-	-
5-53-261	210084-2X	5-4-7171-1	1610	-	-	231502	-	-

Note: For detail information on Center Bearings, refer to J300P-9A.



COUPLING SHAFT COMPONENTS

Tube Shaft Part No.	Center Bearing Number	End Yoke/ Flange Number	Series	Washer	Lockwasher	Nut	Bolt	Cotter Pin
5-53-271	210084-2X	5-4-7171-1	1610	-	-	231502	-	-
5-53-271	210084-2X	90-4-11-1	SPL90	-	-	231502	-	-
5-53-301	-	4-4-6461-1	1550	-	-	-	-	-
5-53-301	-	5-4-8071-1	1610	-	-	-	-	-
5-53-341	232634	6-4-9761-1M	1710	232374	-	-	232375	-
5-53-341	232634	6-4-9161-1M	1710	232374	-	-	232375	-
55-53-11	212028-1X	-	-	-	-	-	-	-
55-53-11	212031-1X	-	-	-	-	-	-	-
55-53-11	212031-1X	-	-	-	-	-	-	-
55-53-11	212032-1X	-	-	-	-	-	-	-
55-53-11	212144-1X	-	-	-	-	-	-	-
55-53-21	212031-1X	-	-	-	-	-	-	-
55-53-21	212144-1X	-	-	-	-	-	-	-
55-53-31	212031-1X	-	-	-	-	-	-	-
55-53-41	212031X	55-4-11-1	SPL55	230123-15	-	16-74-101	-	-
6.3-53-21	210661-1X	6.3-4-821-1	1760	-	-	231502	-	-
6.3-53-21	210661-1X	6-4-7481-1	1710	-	-	231502	-	-
6.5-53-111	-	6.5-4-2151	1810	231296	-	231297	-	-
6.5-53-171	210661-1X	6.5-4-3591-1	1810	230123-6	-	231502	-	-
6.5-53-171	210875-1X	6.3-4-821-1	1760	230123-6	-	20-74-91	-	-
6.5-53-181	210661-1X	6.5-4-3591-1	1810	230123-6	-	231502	-	-
6.5-53-181	210875-1X	6.5-4-3591-1	1810	230123-6	-	20-74-91	-	-
6.5-53-191	210661-1X	6.3-1-25	1810	230123-6	-	20-74-91	-	-
6.5-53-21	210661-1X	6.5-4-1891	1810	230123-6	-	231502	-	-
6.5-53-21	210661-1X	6.5-4-1891-1	1810	230123-6	-	231502	-	-
6.5-53-21	210661-1X	6.5-4-7481-1	1810	230123-6	-	231502	-	-
6.5-53-21	210875-1X	6.5-4-1891	1810	230123-6	-	231502	-	-
6.5-53-21	210875-1X	6.5-4-1891-1	1810	230123-6	-	231502	-	-
6.5-53-21	210875-1X	6.5-4-7481-1	1810	230123-6	-	231502	-	-
6.5-53-51	210661-1X	6.5-1-1931	1810	230123-6	-	231502	-	-
6.5-53-51	210661-1X	6.5-1-2551	1760	230123-6	-	231502	-	-
6.5-53-51	210661-1X	6.5-4-1891	1810	230123-6	-	231502	-	-
6.5-53-51	210661-1X	6.5-4-1891-1	1810	230123-6	-	231502	-	-
6.5-53-51	210661-1X	8-4-851 (WB)	1880	230123-6	-	231502	-	-
6.5-53-51	210874-1X	6.5-4-1891	1810	230123-6	-	231502	-	-
6.5-53-51	210874-1X	8-4-851 (WB)	1880	230123-6	-	231502	-	-
6.5-53-51	210875-1X	6.5-1-1811	1810	230123-6	-	231502	-	-
6.5-53-51	210875-1X	6.5-4-1891-1	1760	230123-6	-	231502	-	-
6.5-53-91	210661-1X	6.5-1-1811	1810	230123-6	-	20-74-91	-	-
6.5-53-91	210661-1X	6.5-4-1891	1810	230123-6	-	20-74-91	-	-
6.5-53-91	210661-1X	6.5-4-1891-1	1810	230123-6	-	20-74-91	-	-
6.5-53-91	210661-1X	6-4-5071-1X	1710	230123-6	-	20-74-91	-	-
6.5-53-91	210661-1X	6-4-5071X	1710	230123-6	-	20-74-91	-	-
6.5-53-91	210661-1X	8-4-851(WB)	1810	230123-6	-	20-74-91	-	-
6.5-53-91	210875-1X	6.3-4-161	1760	230123-6	-	231502	-	-
6.5-53-91	210875-1X	6.3-4-161-1	1760	230123-6	-	231502	-	-
6.5-53-91	210875-1X	6.5-1-1811	1810	230123-6	-	231502	-	-
6.5-53-91	210875-1X	6.5-4-1891	1810	230123-6	-	231502	-	-
6.5-53-91	210875-1X	6.5-4-1891-1	1810	230123-6	-	231502	-	-
6.5-53-91	210875-1X	6-4-5071-1X	1710	230123-6	-	20-74-91	-	-
6.5-53-91	210875-1X	6-4-5071X	1710	230123-6	-	20-74-91	-	-
6.5-53-91	210875-1X	8-4-851(WB)	1810	230123-6	-	231502	-	-
6-53-201	210121-1X	1001283	1710	230123-6	-	231502	-	-
6-53-201	210121-1X	1381136	1710	230123-6	-	231502	-	-
6-53-201	210121-1X	29741	1710	230123-6	-	231502	-	-

Note: For detail information on Center Bearings, refer to J300P-9A.



Important: See Safety Information in General Information Section (J300P-GI)

Tube Shaft Part No.	Center Bearing Number	End Yoke/ Flange Number	Series	Washer	Lockwasher	Nut	Bolt	Cotter Pin
6-53-201	210881-1X	1001283	1710	230123-6	-	231502	-	-
6-53-201	210881-1X	1381136	1710	230123-6	-	231502	-	-
6-53-201	210881-1X	29741	1710	230123-6	-	231502	-	-
6-53-211	211594-1X	6-4-2391-1	1710	230123-6	-	231502	-	-
6-53-241	210121-1X	29741	1710	230123-6	-	231502	-	-
6-53-241	210881-1X	29741	1710	230123-6	-	231502	-	-
6-53-261	-	37046	1710	230123-6	-	231502	-	-
6-53-311	210661-1X	6.3-4-161	1760	230123-6	-	231502	-	-
6-53-311	210661-1X	6.3-4-161-1	1760	230123-6	-	231502	-	-
6-53-311	210661-1X	6.5-1-1811	1810	230123-6	-	231502	-	-
6-53-311	210661-1X	6.5-1-1931	1810	230123-6	-	231502	-	-
6-53-311	210661-1X	6.5-1-2551	1810	230123-6	-	231502	-	-
6-53-311	210661-1X	6.5-4-1891	1810	230123-6	-	231502	-	-
6-53-311	210661-1X	6-4-5071-1X	1710	230123-6	-	231502	-	-
6-53-311	210661-1X	6-4-5071X	1710	230123-6	-	231502	-	-
6-53-311	210875-1X	6.3-4-161	1760	230123-6	-	231502	-	-
6-53-311	210875-1X	6.3-4-161-1	1760	230123-6	-	231502	-	-
6-53-311	210875-1X	6.5-1-1811	1810	230123-6	-	231502	-	-
6-53-311	210875-1X	6.5-1-1931	1810	230123-6	-	231502	-	-
6-53-311	210875-1X	6.5-1-2551	1810	230123-6	-	231502	-	-
6-53-311	210875-1X	6.5-4-1891	1810	230123-6	-	231502	-	-
6-53-311	210875-1X	6-4-5071-1X	1710	230123-6	-	231502	-	-
6-53-311	210875-1X	6-4-5071X	1710	230123-6	-	231502	-	-
6-53-331	211056X	106442	1710	-	-	500898J	-	-
6-53-411	210121-1X	1914392	1710	230123-6	-	231502	-	-
6-53-411	210121-1X	6-4-7141-1	1710	230123-6	-	231502	-	-
6-53-421	210121-1X	1914392	1710	230123-6	-	231502	-	-
6-53-421	210121-1X	6-4-7141-1	1710	230123-6	-	231502	-	-
6-53-471	210121-1X	6-4-5071X	1710	230123-6	-	231502	-	-
70-53-11	211963-1X	-	-	-	-	-	-	-
70-53-11	212135-1X	-	-	-	-	-	-	-
70-53-11	212145-1X	-	-	-	-	-	-	-
70-53-21	212135-1X	-	-	-	-	-	-	-
70-53-31	212134-1X	70-4-11-1	SPL70	230123-6	-	20-74-91	-	-
70-53-31	212145X	70-4-11-1	SPL70	230123-6	-	20-74-91	-	-
70-53-51	212135-1X	-	-	-	-	-	-	-
8-53-31	210748-1X	8-1-411	1850	230123-7	-	24-74-21	-	500024-16
8-53-41	211759-1X	6.5-4-2131	1810	230123-6	-	231502	-	-
8-53-61	210748-1X	8-4-351	1880	230123-7	-	24-74-21	-	500024-16
90-53-11	210084-2X	90-4-11-1	SPL90	-	-	231502	-	-
90-53-21	211625-1X	-	-	-	-	-	-	-
90-53-31	210084-2X	90-4-11-1	SPL90	-	-	231502	-	-
90-53-41	211625-1X	-	-	-	-	-	-	-

Note: For detail information on Center Bearings, refer to J300P-9A.



10-40-11	4	2-40-2611	5	2-53-901	8
100-40-31	6	2-40-2631	5	2-53-921	12
100-53-21	13	2-40-2651	5	2-54-351X	8
140-53-11	9	2-40-2661	4	2-54-361	8
140-53-21	10	2-40-2671	5	2-54-371	8
140-53-31	9	2-40-2681	4	27-40-31	4
140-53-41	9	2-40-2691	5	3-40-1101	5
1-42-101	4	2-40-2741	4	3-40-1181	6
1-42-31	4	2-40-2761	5	3-40-1281	5
1-42-341	4	2-40-2781	4	3-40-1411	6
1-42-351	4	2-40-2791	4	3-40-1421	5
2-40-1011	4	2-40-2801	5	3-40-1431	5
2-40-1031	4	2-40-2811	5	3-40-1471	5
2-40-1041	4	2-40-2831	4	3-40-1491	5
2-40-1071	4	2-40-2851	4	3-40-1501	5
2-40-1131	5	2-40-2871	5	3-40-1511	5
2-40-1211	5	2-40-801	4	3-40-1521	5
2-40-1221	5	2-40-971	4	3-40-1531	5
2-40-1291	5	2-42-131	4	3-40-1541	5
2-40-1521	5	2-42-181	4	3-40-1551	6
2-40-1531	5	2-42-221	4	3-40-1571	6
2-40-1661	4	2-42-281	4	3-40-1581	5
2-40-1671	5	2-42-501	4	3-40-1611	5
2-40-1701	4	2-42-581	4	3-40-1621	5
2-40-1711	5	250-53-11	10	3-40-1711	6
2-40-1741	4	2-53-1011	8	3-40-1871	6
2-40-1771	4	2-53-1021X	8	3-40-1911	5
2-40-1811	5	2-53-1051	8	3-40-2071	5
2-40-1841	4	2-53-1071	8	3-40-2091	6
2-40-1851	5	2-53-1131	12	3-40-2111	5
2-40-1871	5	2-53-1151	8	3-40-2241	5
2-40-1921	5	2-53-1161	8	3-40-481	5
2-40-2021	4	2-53-1191	8	3-40-531	5
2-40-2041	5	2-53-121	12	3-42-451	5
2-40-2051	5	2-53-1211	8	3-53-1031	13
2-40-2091	5	2-53-1311	8	3-53-1041	13
2-40-2211	4	2-53-1321	8	3-53-1121	13
2-40-2221	4	2-53-1331	8	3-53-1131	13
2-40-2231	5	2-53-1351	8	3-53-1181	12
2-40-2241	4	2-53-1371	12	3-53-1191	13
2-40-2301	4	2-53-1571	8	3-53-1211	13
2-40-2361	5	2-53-171	12	3-53-1301	12
2-40-2381	4	2-53-471	12	3-53-1311	13
2-40-2421	5	2-53-491	12	3-53-1351	12
2-40-2441	4	2-53-501	12	3-53-1361	12
2-40-2451	4	2-53-511	12	3-53-1371	12
2-40-2461	5	2-53-531	12	3-53-1381	12
2-40-2481	4	2-53-681	12	3-53-1391	12
2-40-2501	5	2-53-691	12	3-53-1481	13
2-40-2531	5	2-53-711	12	3-53-1531	13



3-53-1551	12	4-53-301	11	6-40-541	7
3-53-1561	13	4-53-331	9	6-40-61	7
3-53-1781	9	4-53-351	9	6-40-621	7
3-53-1791	9	4-53-361	9	6-40-631	7
3-53-1801	9	4-53-401	9	6-40-701	7
3-53-181	12	4-53-501	10	6-40-711	7
3-53-1811	9	4-53-531	9	6-40-741	7
3-53-1821	9	4-53-61	13	6-40-821	7
3-53-1831	9	5-40-1011	6	6-40-831	7
3-53-1891	9	5-40-1031	6	6-40-851	13
3-53-191	8	5-40-1041	6	6-40-891	7
3-53-1921	9	5-40-1051	6	6-53-151	9
3-53-1951	12	5-40-1101	6	6-53-201	9
3-53-1981	12	5-40-1121	6	6-53-211	9
3-53-1991	12	5-40-1151	6	6-53-241	9
3-53-2011	12	5-40-1181	7	6-53-261	10
3-53-2061	9	5-40-1191	6	6-53-271	11
3-53-211	12	5-40-1241	6	6-53-311	10
3-53-2181	12	5-40-1341	7	6-53-331	10
3-53-2281	12	5-40-451	6	6-53-351	11
3-53-2291	12	5-40-471	6	6-53-411	9
3-53-2301	9	5-40-491	6	6-53-421	9
3-53-2361	9	5-40-501	6	6-53-481	10
3-53-2381	12	5-53-111	9	70-40-11	6
3-53-2441	12	5-53-141	9	70-40-31	6
3-53-2451	12	5-53-171	9	70-53-11	13
3-53-2571	13	5-53-191	9	70-53-21	13
3-53-411	13	5-53-261	9	70-53-51	13
3-53-421	9	5-53-271	9	8-40-101	7
3-53-441	13	5-53-331	13	8-40-91	7
3-53-451	13	5-53-341	10	8-53-41	10
3-54-611	8	5-53-371	9	8-53-61	11
4-40-1031	6	55-53-11	13	90-40-11	6
4-40-1061	6	55-53-21	13	90-40-21	6
4-40-471	7	55-53-31	13	90-40-41	6
4-40-721	6	55-53-41	9	90-53-11	9
4-40-741	6	55-53-51	13	90-53-21	13
4-40-761	6	6.3-53-21	10	90-53-31	9
4-40-781	6	6.5-40-141	7	90-53-41	13
4-40-821	6	6.5-40-191	7		
4-40-881	6	6.5-40-201	7		
4-40-891	6	6.5-40-251	7		
4-40-951	6	6.5-53-111	11		
4-40-961	6	6.5-53-171	10		
4-40-981	6	6.5-53-181	10		
4-40-991	6	6.5-53-51	10		
4-53-101	13	6.5-53-91	10		
4-53-111	13	6-40-181	7		
4-53-131	9	6-40-51	7		
4-53-271	9	6-40-521	7		



SPICER[®]



Dana Corporation
Commercial Vehicle Service Parts
P.O. Box 321
Toledo, Ohio 43697-0321
1-800-SAY-DANA (729-3262)
www.dana.com
www2.dana.com/expert

Dana Corporation
Commercial Vehicle Service Parts - Canada
5095 South Service Road
Beamsville, Ontario LOR 1B0
Tech Service: (905) 563-4991