

FLANGE YOKES

SPICER®



**J300P-2
JUNE 2001**

Supersedes
J300P-2
Dated January 1997

**Now Included...
Spicer Life Series® Flange Yokes!**

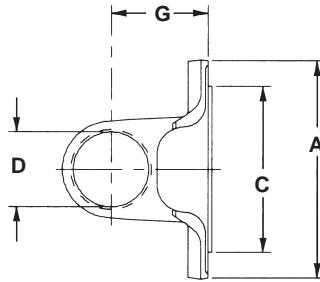


HOW TO USE THIS CATALOG

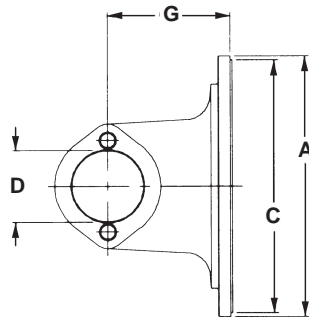
To identify a Flange Yoke, two pieces of information are needed:

1). The Design of the Part

SNAP RING



BEARING PLATE



2). The Series of the Part

A	B - BOLT HOLES			C	Joint Angle	G	Illustration Figure	Spicer Part Number
	Flange or Swing Diameter	Bolt Circle Diameter	Bolt Hole Diameter					
1310 SERIES (Cont'd)				E-3.469	D-1.062 DIA. USE KIT NO. 5-625X, 5-626X, OR 5-153X			
4.625	3.750	0.438	4	2.7500M	20	1.375	1	2-2-479
4.719	3.750	0.481	4	2.5580M	25	1.781	1	2-2-1169
5.219	4.250	0.484	4	2.0000F	19	1.625	1	2-2-1379

Identification of Spicer Life Series™ Flange Yokes that are Spring Tab Design can be found on page 3.

Identification of Flange Yokes that are Snap Ring Design can be found on pages 4 through 6.

Identification of Flange Yokes that are Bearing Plate Design can be found on pages 7 through 9.

A Part Number Index is provided on page 10.



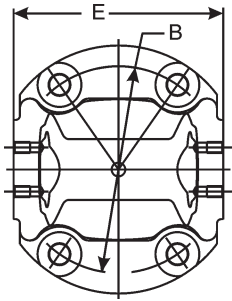


Fig. 1

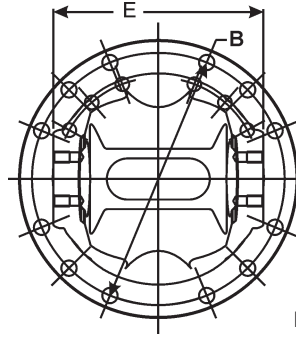
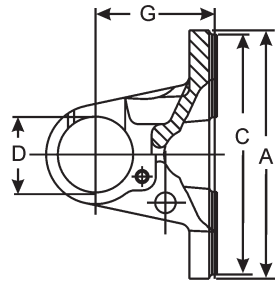


Fig. 2

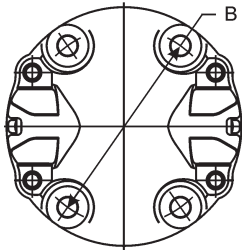
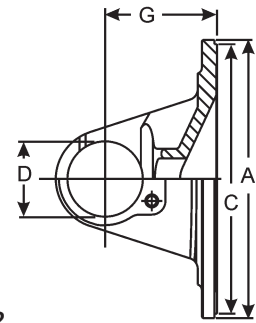


Fig. 3

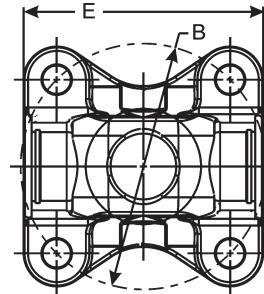
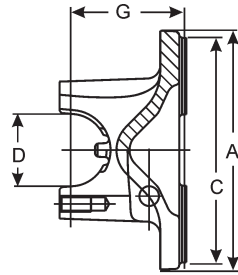
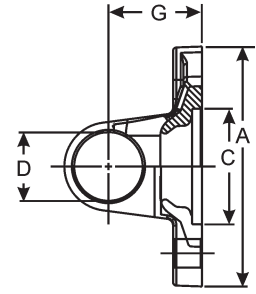


Fig. 4



A	B - BOLT HOLES			C	Joint Angle	G	Illustration Figure	Spicer Part Number
	Flange or Swing Diameter	Bolt Circle Diameter	Bolt Hole Diameter					
SPL140 SERIES								
				E-5.028 IN. (HR STYLE 5.458 IN.)		D-1.936 USE KIT SPL140-1X		
8.0000	7.2500	.3960	12	7.7500M	—	3.0700	2	140-2-19
SPL170 SERIES								
				E-164MM (6.456 IN.)		D-55MM (2.166 IN.) USE KIT SPL170X		
7.0870	5.9060	.5510	4	—	—	2.0080	1	170-2-15 <i>part has serrated flange face</i>
8.0000	7.2500	.4410	12	7.7500M	30.0	3.2080	2	170-2-19 <i>Metric flange</i>
8.0000	8.0000	.4380	12	7.7500M	30.0	3.3750	3	170-2-39-1 <i>Half round metric flange</i>
SPL250 SERIES								
				E-163 MM (6.417 IN.)		D-60 MM (2.362 IN.) USE KIT SPL250X		
7.0870	5.9060	.5510	4	—	45.0	3.5830	1	250-2-15 <i>part has serrated flange face</i>
8.0000	7.2500	.4410	12	7.7500M	—	3.5000	2	250-2-19 <i>Metric flange</i>
SPL90 SERIES								
				E-5.375		D-1.625 USE KIT NO. SPL90X		
5.9060	5.1180	.4780	8	3.5440F	—	3.2810	4	90-2-29 <i>Metric flange</i>
6.6880	6.1250	.3750	8	5.3120M	—	2.7500	3	90-2-49-1 <i>B.S./H.R.style w/brake pilot.</i>
8.0000	7.2500	.3750	8	6.4380M	—	2.7500	3	90-2-39-1 <i>B.S./H.R.style w/brake pilot.</i>



Important: See Safety Information in General Information Section (J300P-GI)



FLANGE YOKES Snap Ring Design

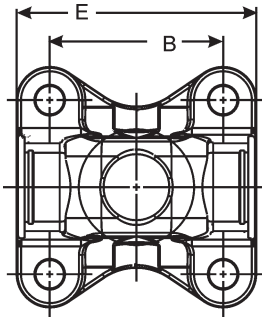


Figure 1

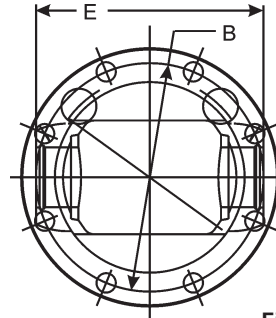
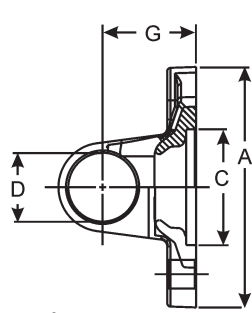


Figure 2

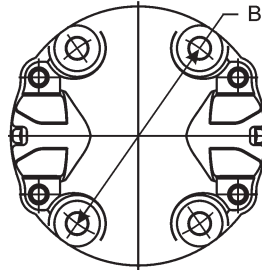
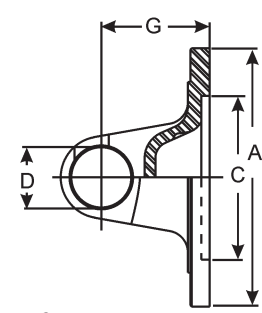
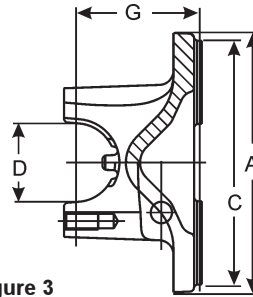


Figure 3



A	B - BOLT HOLES			C	Joint Angle	G	Illustration Figure	Spicer Part Number
	Flange or Swing Diameter	Bolt Circle Diameter	Bolt Hole Diameter					
1000 SERIES				E-2.188 D-.938			USE KIT NO. 5-170X	
3.3750	2.7500	.3120	4	2.2500M	—	1.5620	1	10-2-29
1100 SERIES				E-2.656 D-.938			USE KIT NO. 5-101X OR 5-111X	
3.3750	2.7500	.3120	4	2.2500F	—	1.1880	1	1-2-49
3.3750	2.7500	.3120	4	2.2500M	18.0	1.1880	1	1-2-39
1210 SERIES				E-2.688 D-1.062			USE KIT NO. 5-443X	
3.4060	2.7500	.3280	4	2.2500M	—	1.4840	1	2-2-899
3.7810	3.1250	.3280	4	2.2500M	—	1.2030	1	2-2-1579
3.7100	3.1250	.3340	4	2.2500M	—	1.1880	2	2-2-1419
4.3600	3.5000	.4840	4	2.0000F	20.0	1.6250	1	2-2-1049
1310 SERIES				E-3.469 D-1.062			USE KIT NO. 5-153X OR 5-200X	
3.6250	2.8750	.3800	4	—	—	1.3750	1	2-2-349
3.8750	3.1250	.3750	4	2.3750F	20.0	1.3750	1	2-2-389
3.8750	3.1250	.3750	4	2.3750M	20.0	1.3750	1	2-2-329
3.8750	3.1250	.3750	4	2.3750M	30.0	1.6250	1	2-2-459
3.8750	3.1250	.4060	4	2.3750M	—	1.6250	1	2-2-1609
4.0800	3.1980	.4000	4	1.9680M	—	1.7810	1	2-2-1899
4.0600	3.1980	.4060	4	1.9690M	30.0	1.7810	1	2-2-1819
4.0160	3.2030	.4060	4	1.9690M	30.0	1.7810	1	10 mm bolt holes, equally spaced 2-2-1309
4.1500	3.3440	.4060	4	1.8120M	12.0	1.7700	1	2-2-1679
4.1580	3.3460	.4060	4	2.5620M	—	1.7660	1	10 mm bolt holes, equally spaced 2-2-1519
4.5000	3.5000	.5000	4	2.0000F	—	1.6500	1	10 mm bolt holes, equally spaced 2-2-939
4.6780	3.7400	.4690	4	2.5470M	—	1.7810	1	Bolt holes are equally spaced. Part has hole thru center. 2-2-1729
4.6250	3.7500	.4060	4	2.5590M	—	1.7720	1	2-2-1799
4.6250	3.7500	.4380	4	2.7500M	—	1.1880	1	10 mm bolt holes, equally spaced 2-2-1039



FLANGE YOKES Snap Ring Design



A Flange or Swing Diameter	B - BOLT HOLES			C Pilot Diameter M-Male F-Female	Joint Angle	G Flange Face to Centerline	Illustration Figure	Spicer Part Number
	Bolt Circle Diameter	Bolt Hole Diameter	Number of Bolt holes					
1310 SERIES (Continued)			E-3.469	D-1.062	USE KIT NO. 5-153X OR 5-200X			
4.6250	3.7500	.4380	4	2.7500M	20.0	1.3750	1	2-2-479
4.7190	3.7500	.4810	4	2.5580M	25.0	1.7810	1	2-2-1949
4.7500	3.7500	.5030	4	3.7500M	—	2.0000	1	2-2-1789
5.2190	4.2500	.4840	4	2.0000F	19.0	1.6250	1	2-2-1379
5.7500	4.7500	.5070	4	3.7500M	20.0	1.3750	1	2-2-579
1330 SERIES			E-3.625	D-1.062	USE KIT NO. 5-213X			
4.4690	3.5000	.4840	4	2.0000F	—	1.6250	1	2-2-949
4.6250	3.7500	.4380	4	2.7500M	—	1.5620	1	2-2-489
4.6250	3.7500	.4380	4	2.7500M	—	1.5620	1	2-2-1209
4.9600	3.9380	.4890	4	2.1610F	—	1.9300	1	2-2-1879
5.1560	4.2500	.4530	4	3.1250F	—	1.6880	2	2-2-1399
5.2500	4.2500	.5000	4	2.0000F	—	1.6250	1	2-2-1369
<i>Bolts holes are equally spaced. Part has hole thru center.</i>								
1350 SERIES			E-3.875	D-1.188	USE KIT NO. 5-178X			
4.5000	3.7500	.4380	4	2.7500M	15.0	1.2810	1	3-2-809
4.6250	3.7500	.4380	4	2.7500M	20.0	1.5620	1	3-2-119
5.2500	4.2500	.4700	4	2.0000F	—	1.6250	1	3-2-1619
5.2500	4.2500	.4700	4	2.6800F	—	1.6250	1	3-2-1699
5.2500	4.2500	.5000	4	2.0000F	—	1.6250	1	3-2-1579
6.4060	5.5000	.4530	4	3.5620F	15.0	1.8440	1	3-2-699
1410 SERIES			E-4.438	D-1.188	USE KIT NO. 5-160X			
4.6250	3.7500	.4380	4	2.7500F	—	1.6880	1	3-2-299
4.6250	3.7500	.4380	4	2.7500M	22.0	1.6880	1	3-2-159
4.6250	3.7500	.4380	4	2.7500M	30.0	1.9380	1	3-2-439
4.2340	3.7500	.4840	4	2.7500M	—	1.6880	1	3-2-1329
4.7180	3.7500	.4840	4	2.7500M	—	1.9380	1	3-2-1639
5.4530	3.9380	.4840	4	3.1490M	—	1.6900	—	3-2-1549
4.7240	3.9960	.3940	8	2.9540F	—	2.5310	1	3-2-1159
5.2400	4.2420	.5000	4	2.0000F	—	1.6200	1	3-2-1819
5.3520	4.2500	.4720	4	2.6800F	12.0	1.6200	1	3-2-1709
5.2500	4.2500	.5000	4	2.5620F	—	2.1650	1	3-2-1599
5.3520	4.2500	.5120	4	2.6800F	12.0	1.6200	1	3-2-1759
5.4530	4.4530	.5000	4	3.3440F	—	2.1650	—	3-2-1589
5.8750	4.7500	.5000	4	3.7500M	12.0	1.5000	1	3-2-559
5.8750	4.7500	.5000	4	3.7500M	20.0	1.7500	1	3-2-549
5.8750	4.7500	.5000	4	3.7500M	30.0	2.0000	1	3-2-429
5.7500	4.7500	.5090	4	3.7500M	—	2.0000	1	3-2-1789
5.8120	4.7500	.5310	4	3.7500M	—	2.0000	1	3-2-939
6.3750	5.5000	.4380	4	3.5620F	14.0	1.8440	1	3-2-709
6.7500	5.7500	.4840	4	4.8030F	20.0	2.0000	3	3-2-1659-1
6.8750	6.1250	.3750	8	6.6250M	—	2.0000	2	3-2-579
6.8750	6.1250	.3750	8	6.8750M	—	2.0000	2	3-2-309
<i>Bearing strap style yoke w/brake pilot and bolt pattern</i>								
<i>Flange has pilot for brake</i>								



Important: See Safety Information in General Information Section (J300P-GI)



FLANGE YOKES Snap Ring Design

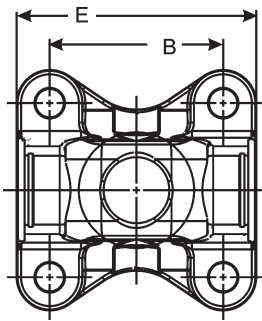


Figure 1

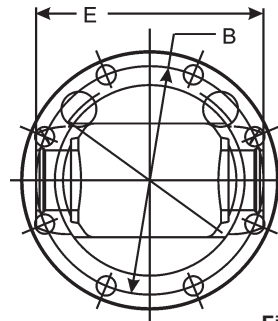
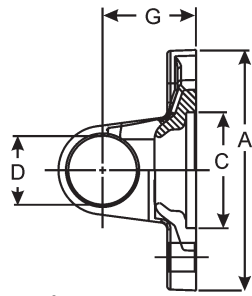


Figure 2

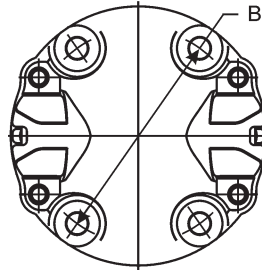
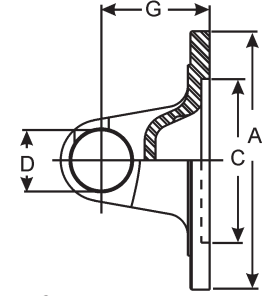
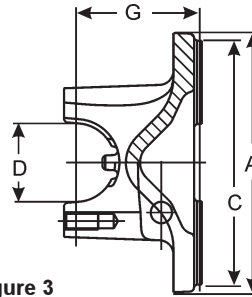


Figure 3



A	B - BOLT HOLES			C	Joint Angle	G	Illustration Figure	Spicer Part Number
	Flange or Swing Diameter	Bolt Circle Diameter	Bolt Hole Diameter					
1480 SERIES				E-4.438	D-1.375	USE KIT NO. 5-188X		
6.6250	3.9380	.4840	4	3.1490M	—	2.3900	1	3-2-1809
5.8750	4.2500	.4720	4	2.6800F	12.0	1.8000	1	3-2-1719
5.8750	4.7500	.5000	4	3.7500M	8.0	1.5000	1	3-2-489
6.8120	4.7500	.5000	4	3.7500M	20.0	2.0000	1	3-2-479
5.8750	4.7500	.5000	4	3.7500M	26.0	2.0000	1	3-2-609
6.8750	6.1250	.3860	8	5.3120M	20.0	1.9380	2	3-2-909
6.8750	6.1250	.3860	8	6.6250M	20.0	2.0000	2	3-2-499
1550 SERIES				E-5.250	D-1.375	USE KIT NO. 5-155X		
5.8750	4.7500	.5000	4	3.7500F	8.0	1.5000	1	4-2-759
5.8750	4.7500	.5000	4	3.7500M	8.0	1.5000	1	4-2-679
5.7740	4.7500	.5120	4	3.7500M	22.0	2.0000	1	4-2-669
6.1560	5.2500	.4530	8	3.7500F	—	2.5000	2	4-2-829
6.8750	6.1250	.3750	8	6.6250M	22.0	2.0000	2	4-2-689
6.8750	6.1250	.3860	8	5.3120M	—	2.0000	2	4-2-699
6.8750	6.1250	.3860	8	5.3750F	22.0	2.0000	2	4-2-719
6.8750	6.1250	.4060	8	5.3120M	—	2.0000	2	4-2-1109



FLANGE YOKES Bearing Plate Design

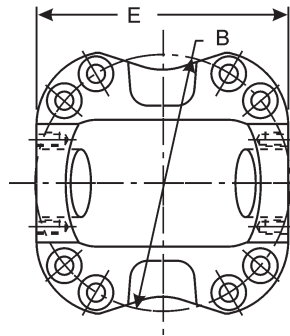


Figure 1

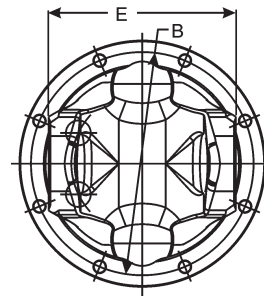
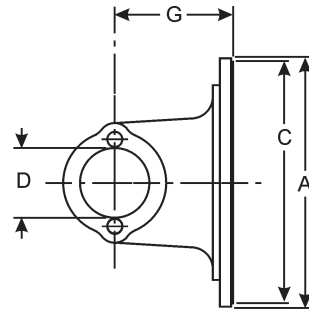


Figure 2

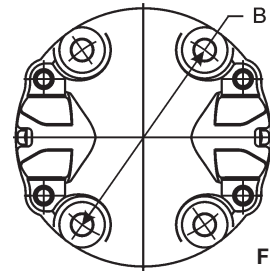
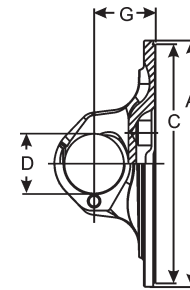
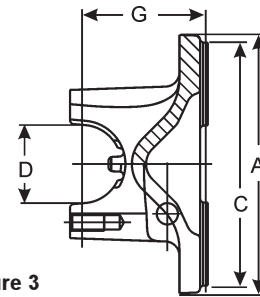


Figure 3



A	B - BOLT HOLES			C	Joint Angle	G	Illustration Figure	Spicer Part Number
	Flange or Swing Diameter	Bolt Circle Diameter	Bolt Hole Diameter					
1610 SERIES				E-5.312 D-1.875		USE KIT NO. 5-279X, 5-674X		
6.3750	5.1240	.6250	4	3.7500M	—	4.6880	2	5-2-1269
6.8750	6.1230	.4480	8	5.3100M	—	2.7500	2	5-2-1189
6.8750	6.1250	.3750	8	5.3120M	—	1.8750	2	5-2-989
6.8750	6.1250	.3750	8	5.3120M	—	2.7500	3	5-2-599-1 <i>Flange has pilot for brake</i>
6.8750	6.1250	.3750	8	5.3120M	—	2.7500	2	5-2-599 <i>B.S./H.R.style w/brake pilot.</i>
6.8750	6.1250	.3750	8	5.3750F	—	1.8750	2	5-2-1089 <i>Flange has pilot for brake</i>
6.8750	6.1250	.3750	8	5.3750F	—	2.7500	2	5-2-249 <i>Part has opening cast thru web</i>
6.8750	6.1250	.3750	8	6.6250M	8.0	1.8750	2	5-2-379
6.8750	6.1250	.3750	8	6.6250M	22.0	2.7500	2	5-2-279
6.8750	6.1250	.4400	12	6.6250M	22.0	2.7500	2	5-2-1159
8.0000	7.2500	.3750	8	6.4350M	—	2.7500	2	5-2-709
8.0000	7.2500	.3750	8	6.4380M	—	2.7500	3	5-2-709-1 <i>Flange has pilot for brake</i>
8.0000	7.2500	.3750	8	6.4380M	—	2.7500	3	5-2-1249-1 <i>B.S./H.R.style w/brake pilot.</i>
8.0000	7.2500	.3750	8	7.7500M	8.0	1.8750	2	5-2-619 <i>B.S./H.R.style w/brake pilot.</i>
8.0000	7.2500	.3750	8	7.7500M	22.0	2.7500	2	5-2-629 <i>Part has opening cast thru web</i>



Important: See Safety Information in General Information Section (J300P-GI)



FLANGE YOKES Bearing Plate Design

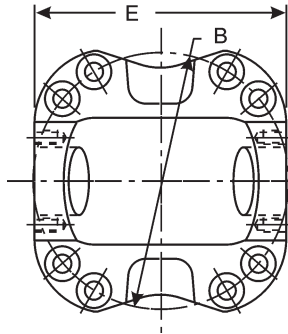


Figure 1

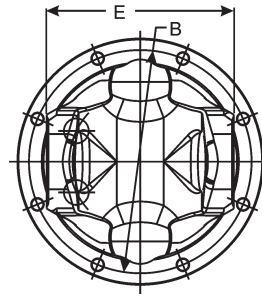
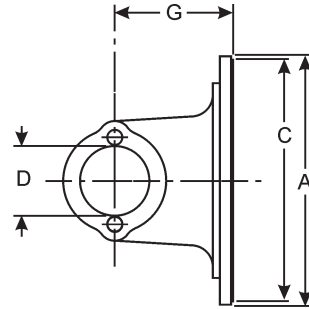


Figure 2

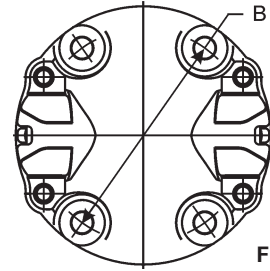
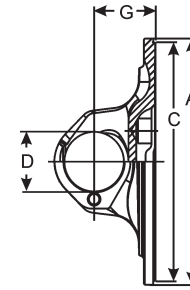
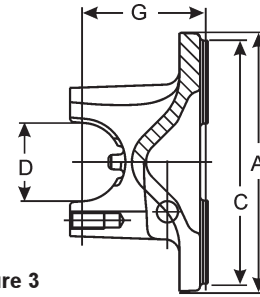


Figure 3



A	B - BOLT HOLES			C	Joint Angle	G	Illustration Figure	Spicer Part Number
	Flange or Swing Diameter	Bolt Circle Diameter	Bolt Hole Diameter					
1710 SERIES								
E-6.094 (6.190 FOR HR STYLE) D-1.938 USE KIT NO. 5-280X, 5-675X								
8.0000	130.0000	12.0000	4	—	—	81.0000	2	6-2-15
<i>150 MM FLANGE W/GROOVES ON FL. FACE</i>								
6.5000	5.3120	.6410	8	3.7500F	—	4.0000	2	6-2-1259
8.0000	7.2500	.3750	8	6.4380M	—	3.0000	2	6-2-789
<i>Flange has pilot for brake</i>								
8.0000	7.2500	.3750	8	6.4380M	—	3.0000	3	6-2-1439-1
<i>B.S./H.R.style w/brake pilot.</i>								
8.0000	7.2500	.3750	8	6.4380M	—	3.0000	2	6-2-1439
<i>Flange has pilot for brake</i>								
8.0000	7.2500	.3750	8	7.7500M	6.0	2.0000	2	6-2-959
<i>Part has opening cast thru web</i>								
8.0000	7.2500	.3750	8	7.7500M	8.0	2.0000	2	6-2-769
8.0000	7.2500	.3750	8	7.7500M	22.0	3.0000	2	6-2-749
8.0000	7.2500	.3750	8	7.7500M	—	3.0000	2	6-2-1239
<i>Bolts rotated 22.5 degrees for brake applications</i>								
8.0000	7.2500	.3750	8	7.7500M	22.0	3.0000	3	6-2-749-1
<i>Part has opening cast thru web</i>								
8.0000	7.2500	.3750	8	8.0000M	—	3.0000	2	6-2-759
<i>Flange has pilot for brake</i>								
8.0000	7.2500	.3780	8	7.7480M	—	2.0000	2	6-2-1099
<i>Part has opening cast thru web</i>								
8.0000	7.2500	.4060	8	7.7500M	—	2.0000	2	6-2-1169
<i>10 mm bolt holes, equally spaced</i>								
8.0000	7.2500	.4060	8	7.7500M	—	3.0000	2	6-2-1249
8.0000	7.2500	.4380	16	6.4380M	—	3.0000	2	6-2-1219
<i>Flange has pilot for brake</i>								
8.0000	7.2500	.4380	12	7.7500M	8.0	2.0000	2	6-2-839
8.0000	7.2500	.4380	8	7.7500M	—	2.5000	2	6-2-1349
<i>Part has opening cast thru web</i>								
8.0000	7.2500	.4380	8	7.7500M	—	3.0000	2	6-2-1159
<i>Part has opening cast thru web</i>								



FLANGE YOKES

Bearing Plate Design



A Flange or Swing Diameter	B - BOLT HOLES			C Pilot Diameter M-Male F-Female	Joint Angle	G Flange Face to Centerline	Illustration Figure	Spicer Part Number
	Bolt Circle Diameter	Bolt Hole Diameter	Number of Bolt holes					
1710 SERIES (Continued) E-6.094 (6.190 FOR HR STYLE) D-1.938 USE KIT NO. 5-280X, 5-675X								
8.0000	7.2500	.4380	12	7.7500M	—	3.0000	3	6-2-779-1
							<i>Bearing strap/half round style</i>	
8.0000	7.2500	.4380	12	7.7500M	—	3.0000	2	6-2-779
							<i>Flange has pilot for brake</i>	
8.0000	7.2500	.4380	8	7.7500M	22.0	3.0000	2	6-2-739
8.0000	7.2500	.4480	8	6.4380M	—	3.0000	2	6-2-1369
1760 SERIES E-7.000 (7.094 FOR HR STYLE) D-1.938 USE KIT NO. 5-407X, 5-677X								
8.0000	7.2500	.4380	12	7.7500M	30.0	3.3750	3	6.3-2-19-1
							<i>Bearing strap/half round style</i>	
8.0000	7.2500	.4380	12	7.7500M	30.0	3.3750	2	6.3-2-19
1800 SERIES E-6.594 D-2.812 FOR KIT NO. 5-124X								
8.0000	7.2500	.4380	12	7.7500M	25.0	3.3750	2	6.5-2-79
							<i>Flange has pilot for brake</i>	
1810 SERIES E-7.547 (7.643 FOR HR STYLE) D-1.938 USE KIT NO. 5-281X, 5-676X								
8.1250	7.2500	.4380	12	7.7500M	12.0	2.5940	2	6.5-2-359
8.0000	7.2500	.4380	12	7.7500M	30.0	3.3750	2	6.5-2-329
8.0000	7.2500	.4380	12	7.7500M	30.0	3.3750	3	6.5-2-329-1
1880 SERIES E-8.094 D-2.188 USE KIT NO. 5-308X								
9.5620	8.2500	.6250	8	7.0000M	8.0	2.5000	1	8-2-119
9.5620	8.2500	.6250	8	7.0000M	22.0	3.5000	1	8-2-109

1-2-39	4	3-2-1709	5	6-2-1099	8
1-2-49	4	3-2-1719	6	6-2-1159	8
10-2-29	4	3-2-1759	5	6-2-1169	8
140-2-19	3	3-2-1789	5	6-2-1219	8
170-2-15	3	3-2-1809	6	6-2-1239	8
170-2-19	3	3-2-1819	5	6-2-1249	8
170-2-39-1	3	3-2-299	5	6-2-1259	8
2-2-1039	4	3-2-309	5	6-2-1349	8
2-2-1049	4	3-2-429	5	6-2-1369	9
2-2-1209	5	3-2-439	5	6-2-1439	8
2-2-1309	4	3-2-479	6	6-2-1439-1	8
2-2-1369	5	3-2-489	6	6-2-15	8
2-2-1379	5	3-2-499	6	6-2-739	9
2-2-1399	5	3-2-549	5	6-2-749	8
2-2-1419	4	3-2-559	5	6-2-749-1	8
2-2-1519	4	3-2-579	5	6-2-759	8
2-2-1579	4	3-2-609	6	6-2-769	8
2-2-1609	4	3-2-699	5	6-2-779	9
2-2-1679	4	3-2-709	5	6-2-779-1	9
2-2-1729	4	3-2-809	5	6-2-789	8
2-2-1789	5	3-2-909	6	6-2-839	8
2-2-1799	4	3-2-939	5	6-2-959	8
2-2-1819	4	4-2-1109	6	8-2-109	9
2-2-1879	5	4-2-669	6	8-2-119	9
2-2-1899	4	4-2-679	6	90-2-39-1	3
2-2-1949	5	4-2-689	6	90-2-49-1	3
2-2-329	4	4-2-699	6		
2-2-349	4	4-2-719	6		
2-2-389	4	4-2-759	6		
2-2-459	4	4-2-829	6		
2-2-479	5	5-2-1089	7		
2-2-489	5	5-2-1159	7		
2-2-579	5	5-2-1189	7		
2-2-899	4	5-2-1249-1	7		
2-2-939	4	5-2-1269	7		
2-2-949	5	5-2-249	7		
250-2-15	3	5-2-279	7		
250-2-19	3	5-2-379	7		
3-2-1159	5	5-2-599	7		
3-2-119	5	5-2-599-1	7		
3-2-1329	5	5-2-619	7		
3-2-1549	5	5-2-629	7		
3-2-1579	5	5-2-709	7		
3-2-1589	5	5-2-709-1	7		
3-2-159	5	5-2-989	7		
3-2-1599	5	6.3-2-19	9		
3-2-1619	5	6.3-2-19-1	9		
3-2-1639	5	6.5-2-329	9		
3-2-1659-1	5	6.5-2-359	9		
3-2-1699	5	6.5-2-79	9		





SPICER[®]



Commercial Vehicle Service Parts
Dana Corporation
P.O. Box 321
Toledo, OH 43697
Phone: 419-866-3900
Fax: 419-866-3925
www.dana.com
www2.dana.com/expert

© Dana Corporation, 2001