



DRIVELINE COMPONENTS CATALOG SLIP YOKE ASSEMBLIES

**J300P-3
FEBRUARY 2003**

**Supersedes
Section 3, Dated
January 2000**

**New Inside!
Splined Sleeves
See Page 18**



People Finding A Better Way[®]

HOW TO USE THIS CATALOG

INCLUDED IN THIS CATALOG

1. Transmission-type slip yokes- page 11, Hex, Square and Round Hole- page 17, and Splined Sleeves - page 18
2. Each page includes a column that provides the part number of the plug used in the end of most slip yokes.
3. A very important "Centerline to Face of Plug" dimension appears on each page.

HOW TO IDENTIFY A PART USING THIS CATALOG

To identify any slip yoke, four pieces of information are required:

1. Determine Series
2. Determine spline O.D.
3. Determine number of teeth
4. Determine length - centerline to end
5. Determine hub diameter (if a transmission-type slip yoke)

Series and all pertinent series dimensions appear as shown in the sample below:

1100 SERIES **E-2.656 D-.938 USE KIT 5-101X & 5-111X**

Spline O.D. and number of teeth are found at the beginning of each data section--

1.750-16 Spline

Individual part data is shown following the spline data heading--

1.750 8.125 - 1.375 500168-2 D4M 4-68-38X SR 4-3-1641KX

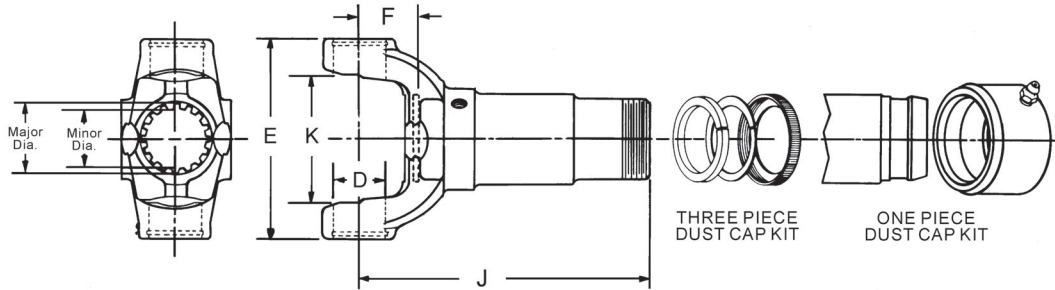
Note that footnotes are listed immediately under the yoke dimensional data, alleviating the need to look at the bottom of the page.

IMPORTANT NOTICE: The data listed herein is correct to the best of our knowledge and belief; having been compiled from reliable and official sources of information. However, WE CANNOT ASSUME ANY RESPONSIBILITY for possible error.



SLIP YOKE ASSEMBLIES

LD & MD Driveshaft Style

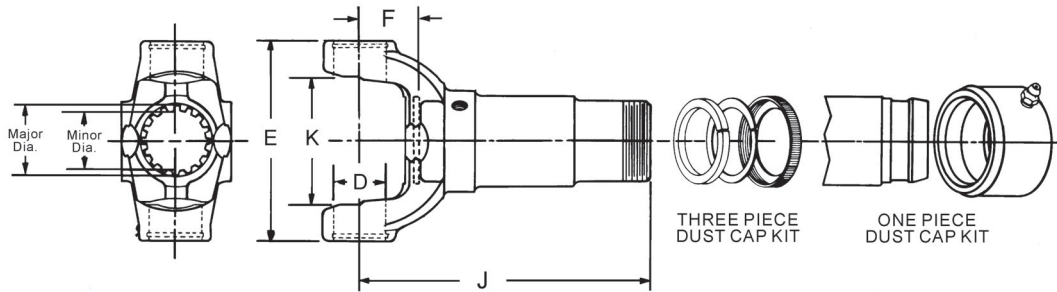


J C/L to End of Spline	Joint Angle	F C/L to Face of Plug	Part of Slip Yoke Assembly			Style	Slip Yoke Assembly Part Number
			Lube Fitting	Dust Cap & Washer Kit	Slip Yoke Plug Number		
SPL70 SERIES		E-5.250	D-1.375			USE KIT SPL70X	
1.7760-26 Based On 27 Involute Spline							
8.4800	—	1.8900	-		70-68-18X	SR	70-3-21X <i>Use boot 212146X-Order separately</i>
9.2790	—	1.8900	-		70-68-18X	SR	70-3-41X <i>Use boot 212146X-Order separately</i>
SPL90 SERIES		E-5.375	D-1.625			USE KIT SPL90X	
1.9390-30 Involute Spline							
10.1000	25.0	1.7970	500168-2	90-86-18	5-68-108X	SR	90-3-21X
8.2500	25.0	1.7500		90-86-18	5-68-164	SR	90-3-41X <i>Mates with 90-40-21 and 90-53-21</i>
1000 SERIES		K-1.500	D-.938			USE KIT 5-170X	
1.0000-6 Spline							
5.5000	—	1.5000	500174-1	-	-	SR	10-3-131X
1.1250-10 Spline							
5.5000	—	—	500174-1	-	-	SR	10-3-81X
1.1560-26 Involute Spline							
5.5000	60.0	1.5310	500174-1	D2L	2-68-23	SR	10-3-291KX
1.2500-16 Spline							
4.4380	60.0	1.4000	500174-1	D2A		SR	10-3-121KX
5.5000	60.0	1.5620	500174-1	D2A	2-68-23	SR	10-3-18KX
1.2500-6 Spline							
5.5000	60.0	1.4000	500174-1	-	-	SR	10-3-51X
1100 SERIES		E-2.656	D-.938			USE KIT 5-101X & 5-111X	
1.0620-16 Spline							
2.8750	30.0	.9380	500174-1	D1A	1-68-14	SR	1-3-88KX
4.3120	30.0	.9380	500174-1	D1A	1-68-14	SR	1-3-18KX
1210 SERIES		E-2.688	D-1.062			USE KIT 5-443X	
1.2190-26 Based On 28 Involute Spline							
5.0620	—	1.2500			500166-20	SR	2-3-8811X <i>Use boot #40465, clamps #40540-1,-2; I.S. snap ring style</i>
5.1090	—	1.5470			500166-20	SR	2-3-9991X <i>Use boot 211513X-order separately</i>
1.2500-14 Based On 16 Spline							
6.3440	31.0	1.5470			500166-20	SR	2-3-10521X <i>Optional: use dust cap 211256X</i>
6.3750	20.0	1.2500			500166-20	SR	2-3-8861X <i>Use boot 211344X-order separately</i>
6.3750	20.0	1.2500			500166-20	SR	2-3-9491X <i>2-3-8861X W/dampener, use boot 211344X-order separately</i>
7.7500	13.0	1.0000			500166-20	CV	2-3-9681X <i>CV style yoke, use boot 211344X-order separately</i>
8.0000	20.0	1.2500			2-68-23	SR	2-3-8961X <i>Use boot 211344X-order separately</i>



SLIP YOKE ASSEMBLIES

LD & MD Driveshaft Style



J C/L to End of Spline	Joint Angle	F C/L to Face of Plug	Part of Slip Yoke Assembly			Style	Slip Yoke Assembly Part Number
			Lube Fitting	Dust Cap & Washer Kit	Slip Yoke Plug Number		
1310 SERIES		E-3.469	D-1.062	USE KIT 5-153X, 5-200X OR 5-785X			
1.2500-14 Based On 16 Spline							
6.5620	30.0	1.4380			500166-20	SR	2-3-10661X <i>Use boot 211344X-order separately</i>
1.2500-16 Spline							
3.5620	16.0	1.0000	500174-1	D2B	2-68-23	SR	2-3-3951KX
4.1250	16.0	1.0000	500174-1	D2B	2-68-23	SR	2-3-258KX
4.6880	18.0	1.0000	500174-1	D2A	2-68-23	SR	2-3-198KX
4.8750	30.0	1.1880	500174-1	D2K	2-68-23	SR	2-3-1781KX
5.0000	18.0	1.0000	500174-1	D2A	2-68-23	SR	2-3-1421KX
6.1250	15.0	1.0000	500174-1	D2F	2-68-23	SR	2-3-1461KX
6.5620	30.0	1.4380	500174-1	D2K	2-68-23	SR	2-3-4441KX
6.5620	30.0	1.4380	500174-1	211256X	2-68-23	SR	2-3-8841KX
1.3750-15 Based On 16 Spline							
6.0000	20.0	1.0620			500166-22	SR	2-3-10411X <i>Use boot kit no. 211916X-order separately</i>
6.6880	20.0	1.0620	500174-1	211121X	2-68-143	SR	2-3-7661KX
6.6880	20.0	1.4060			500166-22	SR	2-3-12311X <i>Use boot kit no. 211932X-order separately</i>
6.7240	—	1.4170			500166-22	SR	2-3-12881X <i>Use boot kit no. 211916X-order separately</i>
6.8120	30.0	1.2500			500166-22	SR	2-3-11351X <i>Use boot kit no. 211932X-order separately</i>
7.8750	—	1.5000			500166-22	SR	2-3-12421X <i>Use boot kit no. 211916X-order separately</i>
1.3750-16 Spline							
3.7500	15.0	1.0000	500174-1	D2C	3-68-23	SR	2-3-178KX
4.1880	15.0	1.0000	500174-1	D2C	3-68-23	SR	2-3-348KX
5.3750	30.0	1.0000	500174-1	211121X	3-68-23	SR	2-3-12301KX
5.3750	15.0	1.0000	500174-1	D2C	3-68-23	SR	2-3-128KX
6.0000	20.0	1.0620	500174-1	D2C	2-68-143	SR	2-3-4951KX <i>Use dust cap kit D3E for reverse slip applications</i>
6.0000	20.0	1.0620	500174-1	211121X	2-68-143	SR	2-3-7981KX
6.3440	20.0	1.0620	500174-1	D2C	2-68-143	SR	2-3-4071KX
6.7500	17.0	.8750	500174-1	D2M	3-68-23	SR	2-3-1931KX
6.8120	—	1.5000	500174-1	211121X	2-68-143	SR	2-3-10621KX <i>7260 Series</i>
6.8120	30.0	1.5000	500174-1	211121X	2-68-143	SR	2-3-8001KX
6.8750	30.0	1.5000	500174-1	D2C	3-68-23	SR	2-3-5221X <i>Use dust cap kit D3E for reverse slip applications</i>
7.8750	—	1.5000	500174-1		3-68-23	SR	2-3-5821X <i>Use dust cap kit D3E for reverse slip applications</i>
7.8750	30.0	1.5000	500174-1	211121X	2-68-143	SR	2-3-8021KX
1.3750-31 Based On 32 Involute Spline							
6.6250	30.0	1.5310	500174-1	D2N	2-68-134	SR	2-3-7171KX



SLIP YOKE ASSEMBLIES

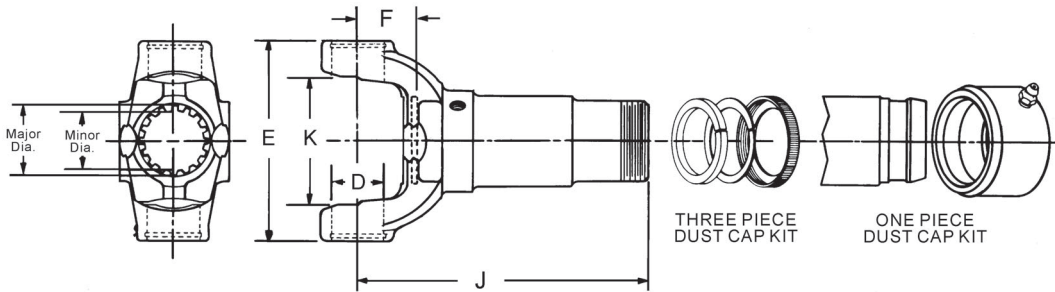
LD & MD Driveshaft Style

J C/L to End of Spline	Joint Angle	F C/L to Face of Plug	Part of Slip Yoke Assembly			Style	Slip Yoke Assembly Part Number
			Lube Fitting	Dust Cap & Washer Kit	Slip Yoke Plug Number		
1310 SERIES (Continued) E-3.469 D-1.062 USE KIT 5-153X, 5-200X OR 5-785X							
1.3770-31 Based On 32 Involute Spline							
6.7500	10.0	.8750	500174-1	211121X	2-68-143	SR	2-3-10261KX
6.7500	10.0	.8750			500166-22	SR	2-3-10801X
<i>Use boot 211600X-order separately</i>							
1.3780-31 Based On 32 Involute Spline							
6.8120	30.0	1.5000	500174-1	211411X	2-68-143	SR	2-3-10641KX
6.8120	30.0	1.5000			2-68-63	SR	2-3-9371X
<i>Use boot kit 211600X, order separately</i>							
1.3900-30 Based On 31 Involute Spline							
5.0620	—	1.4380	500174-1	211121X	3-68-23	SR	2-3-8311X
<i>Spec 4X4 axl yk w/hole in plug</i>							
5.0620	—	1.4380	231330	2-86-298	500166-22	SR	2-3-8481X
<i>Spec 4X4 axle yoke w/lube fitting in yoke</i>							
5.0620	—	1.4380			500166-22	SR	2-3-8741X
<i>Use boot#40465, clamps #40540-1,-2; I.S. snap ring style</i>							
1.5000-16 Spline							
2.9060	16.0	.6560	500174-1	D3F	2-68-64	SR	2-3-7691KX
6.8750	30.0	1.5310	500174-1	D3A	3-68-33	SR	2-3-6061KX
1330 SERIES SR: E-3.875 OTHERS E-3.625, D-1.062 USE KIT 5-213X, 5-790X							
1.2840-29 Based On 30 Involute Spline							
6.6000	—	1.1000			500166-22	SR	2-3-13221X
<i>Used on driveshaft w/outboard slip</i>							
1.3380-19 Based On 20 Involute Spline							
6.7000	—	1.0000			500166-22	SR	2-3-13831X
<i>Use boot kit 212094X, order separately</i>							
1.3750-14 Based On 16 Spline							
6.7200	—	1.1020			500166-22	SR	2-3-14331X
<i>Use boot kit no. 211932X-order separately</i>							
1.3750-15 Based On 16 Spline							
5.4100	—	1.0600			500166-22	SR	2-3-13571X
<i>Use boot kit no. 211916X-order separately</i>							
6.0000	35.0	1.0000			500166-23	SR	2-3-8921X
<i>Use boot kit no. 211932X-order separately</i>							
6.6250	35.0	1.0000		211121X	500166-22	SR	2-3-11991KX
<i>Optional: may use boot kit nos. 211916X or 211932X</i>							
6.6250	35.0	1.0000	500174-1	211121X	3-68-23	SR	2-3-7681KX
7.5000	—	1.0000	500174-1	211121X	3-68-23	SR	2-3-8941KX
<i>Use boot kit no. 211932X-order separately</i>							
1.3750-16 Spline							
6.0000	15.0	1.0000	500174-1	D3E	3-68-23	SR	2-3-4681KX
6.0000	55.0	1.0000	500174-1	211121X	2-68-143	SR	2-3-7961KX
7.5000	30.0	1.0000	500174-1	211121X	2-68-28X	SR	2-3-12031KX
7.5000	17.0	1.0000			3-68-23	SR	2-3-7481X
7.5000	35.0	1.0000	500174-1	211121X	3-68-23	SR	2-3-8041KX
1.3780-31 Based On 32 Involute Spline							
6.0000	—	1.0000	500174-1	211121X	2-68-143	SR	2-3-10571KX
1.5000-15 Based On 16 Spline							
7.3120	45.0	1.1880			3-68-33	SR	2-3-10871X
<i>Used on driveshaft w/outboard slip</i>							
7.5000	19.0	1.0000	500174-1	211158X	3-68-33	SR	2-3-8111KX



SLIP YOKE ASSEMBLIES

LD & MD Driveshaft Style



J C/L to End of Spline	Joint Angle	F C/L to Face of Plug	Part of Slip Yoke Assembly			Style	Slip Yoke Assembly Part Number
			Lube Fitting	Dust Cap & Washer Kit	Slip Yoke Plug Number		
1350 SERIES		E-3.875		D-1.188			USE KIT 5-178X OR 5-799X
1.4030-21 Involute Spline							
4.8120	—	1.1880		211158X	3-68-33	SR	3-3-4671KX
1.5000-16 Spline							
7.3120	—	1.1880		211158X	3-68-33	SR	3-3-4991KX
1.3750-15 Based On 16 Spline							
6.8120	45.0	1.1880	500174-1	211121X	3-68-33	SR	3-3-2701KX
1.3750-16 Spline							
5.2500	20.0	1.1880	500174-1	D3E	3-68-33	SR	3-3-758KX
5.6880	20.0	1.1880	500174-1	D2C	3-68-33	SR	3-3-1421KX
5.8120	20.0	1.1880	500174-1	D3G	3-68-33	SR	3-3-1501KX
6.6250	20.0	1.1880	500174-1	D3G	3-68-33	SR	3-3-2591KX
1.3775-31 Based On 32 Involute Spline							
6.6250	20.0	1.1880	500174-1	D3F	3-68-33	SR	3-3-2471KX
1.3900-30 Based On 31 Involute Spline							
4.8100	45.0	1.1900			500166-22	SR	3-3-3001X
					<i>Use boot # 40929 & clamps 40540-4,-3 order separately</i>		
1.4630-21 Based On 22 Involute Spline							
7.3100	—	1.1600			500166-24	SR	3-3-6381X
7.3120	—	1.1900			500166-24	SR	3-3-6201X
					<i>Use boot kit 212010X-Order separately</i>		
7.3120	—	1.1900			500166-24	SR	3-3-6981X
					<i>Use boot kit 212010X-Order separately</i>		
1.5000-14 Based On 16 Spline							
7.3120	—	1.1880			500166-24	SR	3-3-4781X
					<i>Use boot kit 211503X-order separately</i>		
7.3120	—	1.1880			500166-24	SR	3-3-5461X
					<i>Used on driveshaft w/outboard slip</i>		
1.5000-15 Based On 16 Spline							
6.9380	—	1.1880			500166-24	SR	3-3-4651X
					<i>Use boot kit 211503X-order separately</i>		
7.3100	—	1.1880	500174-1	211158X	3-68-33	SR	3-3-5921KX
7.3120	—	1.1880	500174-1	211158X	3-68-33	SR	3-3-2801KX
1.5000-16 Spline							
3.3440	20.0	1.0620	500174-1	D3A	3-68-104	SR	3-3-2931KX
3.6880	—	1.1880	500174-1	D3A	3-68-33	SR	3-3-398KX
3.9380	20.0	1.1880	500174-1	D3A	3-68-33	SR	3-3-388KX
4.9380	20.0	1.1880	500174-1	D3K	3-68-33	SR	3-3-5181KX
5.8120	20.0	1.3120	500174-1	D3A	3-68-33	SR	3-3-598KX
6.7190	20.0	1.1880	500174-1	D3A	3-68-33	SR	3-3-1561KX
7.3120	20.0	1.1880	500174-1	D3A	3-68-33	SR	3-3-488KX
7.9300	—	1.1560			3-68-33	SR	3-3-3601X
					<i>Use boot kit 211503X-order separately</i>		
8.0000	45.0	1.1880	500174-1	D3A	3-68-33	SR	3-3-2681KX



SLIP YOKE ASSEMBLIES

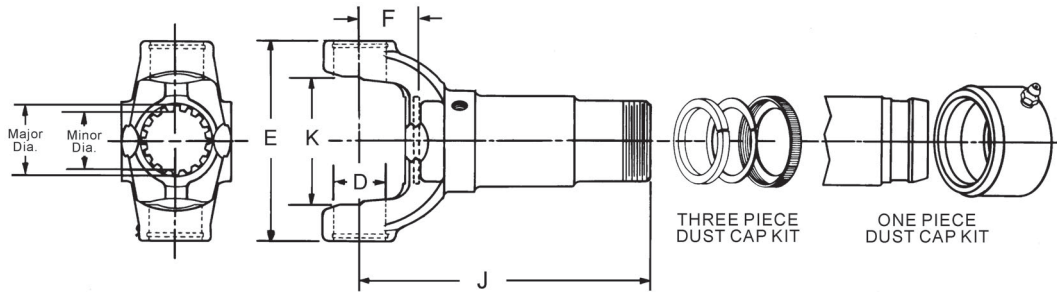
LD & MD Driveshaft Style

J C/L to End of Spline	Joint Angle	F C/L to Face of Plug	Part of Slip Yoke Assembly			Style	Slip Yoke Assembly Part Number
			Lube Fitting	Dust Cap & Washer Kit	Slip Yoke Plug Number		
1410 SERIES		E-4.438	D-1.188		USE KIT 5-160X OR 5-801X		
1.3750-16 Spline							
5.2500	20.0	1.1560	500174-1	D3E	3-68-33	SR	3-3-788KX
5.8120	20.0	1.1560	500174-1	D3G	3-68-33	SR	3-3-1481KX
1.4630-21 Based On 22 Involute Spline							
7.2800	—	1.1600			500166-24	SR	3-3-6611X <i>Used on driveshaft w/outboard slip</i>
7.2800	—	1.1600			500166-24	SR	3-3-6791X <i>W/5.300" OD Dampener</i>
1.5000-14 Based On 16 Spline							
7.2810	—	1.1560			500166-24	SR	3-3-4871X <i>Use boot kit 212010X-Order separately</i>
7.2810	45.0	1.1560			500166-24	SR	3-3-5491X <i>Use boot kit 211503X-order separately</i>
1.5000-15 Based On 16 Spline							
7.2810	45.0	1.1560	500174-1	211158X	3-68-33	SR	3-3-5411KX
7.8120	30.0	1.3440	500167-2	D3A	3-68-18X	SR	3-3-748KX <i>Relief valve in plug</i>
8.5620	—	1.3440	500174-1	D3F	3-68-63	SR	3-3-768KX <i>Part has wide tooth, mates w/3-40-531</i>
1.5000-15 Based On 16 Involute Spline							
7.2800	—	1.1560				SR	3-3-3211X
1.5000-16 Spline							
3.9060	20.0	1.1560	500174-1	D3A	3-68-33	SR	3-3-468KX
5.2500	20.0	1.1560	500174-1	D3K	3-68-33	SR	3-3-2041KX
6.5000	55.0	1.1560	500174-1	D3A	3-68-33	SR	3-3-118KX
6.6880	28.0	1.3440	500174-1	D3B	3-68-33	SR	3-3-798KX
7.8120	—	1.3440	500174-1	211922X	3-68-33	SR	3-3-4551KX
7.8120	28.0	1.3440	500174-1	D3A	3-68-33	SR	3-3-508KX
7.8120	20.0	1.3440	500174-1	211158X	3-68-33	SR	3-3-5481KX
8.5620	—	1.3440	500174-1	D3J	3-68-113	SR	3-3-1831KX
1.5280-23 Involute Spline							
6.8100	—	1.3120	500174-1	211158X	3-68-163	SR	3-3-6641X
1.5620-16 Spline							
6.8120	21.0	1.3120	500174-1	D3H	3-68-163	SR	3-3-1701KX
1.5640-22 Based On 24 Involute Spline							
6.7200	—	1.2200			500166-26	SR	3-3-6041X <i>Use boot kit 212007X-order separately</i>
1.5870-22 Based On 24 Involute Spline							
6.7200	—	1.2200			500166-26	SR	3-3-7001X <i>Use boot kit 212007X-order separately</i>
1.6050-15 Involute Spline							
5.7500	—	1.3440	500174-1	D4G	3-68-163	SR	3-3-3871KX
1.6540-20 Involute Spline							
4.8120	—	1.3120			3-68-183	SR	3-3-3791X <i>Hub dia. not ground</i>
1.7500-16 Spline							
3.2500	—	1.1880	500174-1	D4F	3-68-54	SR	3-3-1511KX



SLIP YOKE ASSEMBLIES

LD & MD Driveshaft Style

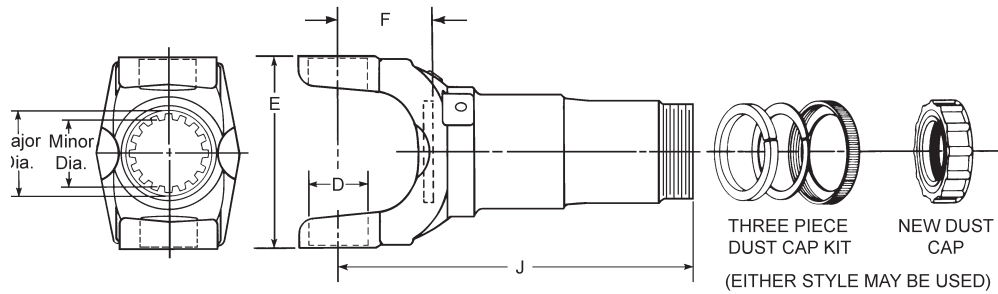


J C/L to End of Spline	Joint Angle	F C/L to Face of Plug	Part of Slip Yoke Assembly			Style	Slip Yoke Assembly Part Number
			Lube Fitting	Dust Cap & Washer Kit	Slip Yoke Plug Number		
1480 SERIES		E-4.438	D-1.375		USE KIT 5-188X OR 5-803X		
1.5620-16 Spline							
6.0000	26.0	1.3120			3-68-163	SR	3-3-5141X
6.8120	21.0	1.3120	500174-1	D3H	3-68-163	SR	3-3-1601KX
9.5000	35.0	2.0000	500174-1	D3H	3-68-163	SR	3-3-1641KX
1.5640-23 Based On 24 Involute Spline							
6.8100	—	1.3120				SR	3-3-6061X
1.7840-27 Involute Spline							
3.7190	—	1.1090			3-68-203	SR	3-3-3121X
2.2500-10 Spline							
3.7190	8.0	1.1880	500174-1	D3D	3-68-93	SR	3-3-1621KX
1500 SERIES		E-4.562	D-1.562		USE KIT 5-115X		
1.7500-16 Spline							
6.6880	—	1.7500	500168-2	D4A	4-68-34	BP	4-3-88KX
1550 SERIES		E-5.250	D-1.375		USE KIT 5-155X OR 5-808X		
1.7500-16 Spline							
5.3750	45.0	1.3750	500168-2	D4M	4-68-143	SR	4-3-1751KX
6.8750	22.0	1.3750	500168-2	D4K	4-68-143	SR	4-3-1241KX
7.5620	35.0	2.0620	500168-2	D4M	4-68-143	SR	4-3-2121KX
8.1250	22.0	1.3750	500168-2	D4J	4-68-143	SR	4-3-1411KX
8.1250	—	1.3750	500168-2	D4M	4-68-38X	SR	4-3-1641KX
9.0630	35.0	2.0620		D4M	4-68-143	SR	4-3-2141KX
10.0620	35.0	2.0620	500168-2	D4J	4-68-143	SR	4-3-1431KX
1.8140-28 Involute Spline							
10.5000	—	2.1250		231973	4-68-163	SR	4-3-2331X <i>Includes dust cap</i>
2.0000-16 Spline							
4.8750	22.0	1.4690	500168-2	5-86-68	4-68-43	SR	4-3-1921KX
8.8120	—	2.7300	500167-2	5-86-68	5-68-78X	SR	4-3-2041KX
<i>Relief valve in plug</i>							
2.5000-16 Spline							
3.5000	8.0	1.1250	500168-2	D4L	4-68-74	SR	4-3-1261KX



SLIP YOKE ASSEMBLIES

HD Driveshaft Style

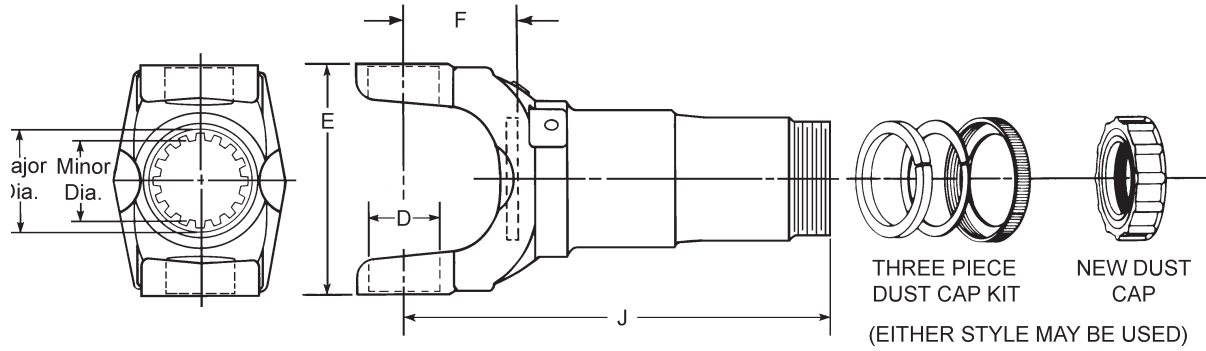


J C/L to End of Spline	Joint Angle	F C/L to Face of Plug	Part of Slip Yoke Assembly			Style	Slip Yoke Assembly Part Number
			Lube Fitting	Dust Cap & Washer Kit	Slip Yoke Plug Number		
1610 SERIES		E-5.312	D-1.875		USE KIT 5-279X, 5-674X		
2.0000-15 Based On 16 Spline							
9.3120	35.0	1.9380	500167-2	5-86-68	5-68-78X	BP	5-3-458KX
2.0000-16 Spline							
6.7500	—	2.6880	500168-2	5-86-68	5-68-174	BP	5-3-398KX
7.4800	—	3.1900	500174-1	5-86-68	5-68-174	BP	5-3-3321KX
7.8120	22.0	2.6880	500168-2	5-86-68	5-68-174	BP	5-3-108KX
8.1880	—	1.9400	500168-2	5-86-68	5-68-54	BP	5-3-488KX
8.8750	22.0	1.4400	500168-2	5-86-68	5-68-174	BP	5-3-368KX
9.3120	30.0	3.1880	500168-2	5-86-68	5-68-174	BP	5-3-288KX
9.8120	21.0	2.6880	500168-2	5-86-68	5-68-174	BP	5-3-128KX
10.3120	27.0	1.9380	500168-2	5-86-68	5-68-174	BP	5-3-1411KX
10.3120	35.0	2.4400	500168-2	5-86-68	5-68-164	BP	5-3-1711KX
10.6880	45.0	3.6880	500168-2	5-86-68	5-68-164	BP	5-3-3181KX
10.8120	35.0	3.1880	500168-2	5-86-68	5-68-164	BP	5-3-2261KX
11.9380	45.0	3.6880	500168-2	5-86-68	5-68-164	BP	5-3-3121KX
2.5000-16 Spline							
9.5000	—	2.0000	500168-2	6.3-86-18	6-68-64	BP	5-3-3101KXM <i>Metric yoke</i>
2.6720-17 Based On 18 Involute Spline							
3.5000	12.0	1.3750	500168-2	D5C	5-68-53	BP	5-3-1861KX
2.6720-18 Involute Spline							
4.2500	8.0	1.2500	500168-2	D5C	5-68-33	BP	5-3-198KX
2.6760-18 Involute Spline							
3.5000	8.0	1.2500	500168-2	D5C	5-68-33	BP	5-3-168KX
1710 SERIES		E-6.094 (6.190 FOR HR STYLE) D-1.938 USE KIT 5-280X, 5-675X					
2.5000-15 Based On 16 Spline							
12.7190	40.0	3.2190	500168-2	6.3-86-18	6-68-38X	BP	6-3-3541KX <i>Relief valve in plug</i>
2.5000-16 Spline							
6.7190	30.0	1.7190	500168-2	6.3-86-18	6-68-74	BP	6-3-2761KX
7.2190	—	1.7200	500168-2	6.3-86-18	6-68-74	BP	6-3-3661KX
7.4690	30.0	1.7190	500168-2	6.3-86-18	6-68-74	BP	6-3-2741KX
7.9690	20.0	1.7190	500168-2	6.3-86-18	6-68-74	BP	6-3-2801KX
8.3120	—	1.7190	500168-2	6.3-86-18	6-68-74	BP	6-3-3321KX
8.4690	30.0	1.7190	500168-2	6.3-86-18	6-68-74	BP	6-3-2721KX
8.8440	22.0	1.7190	500168-2	6.3-86-18	6-68-74	BP	6-3-2631KX
9.3440	—	2.5160	500174-1	211158X	6-68-74	BP	6-3-3521KX
9.5940	22.0	1.7190	500168-2	6.3-86-18	6-68-74	BP	6-3-2671KX
10.3100	—	2.4400	500167-2	6.3-86-18	6-68-63	BP	6-3-3151KX
10.7190	45.0	3.2190	500168-2	6.3-86-18	6-68-64	BP	6-3-3481KX
11.6880	30.0	2.4380	500168-2	6.3-86-18	6-68-74	BP	6-3-2651KX



SLIP YOKE ASSEMBLIES

HD Driveshaft Style

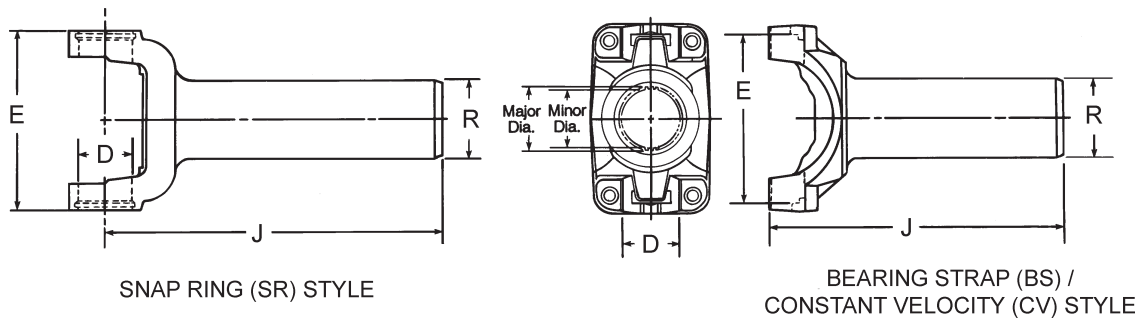


J C/L to End of Spline	Joint Angle	F C/L to Face of Plug	Part of Slip Yoke Assembly			Style	Slip Yoke Assembly Part Number
			Lube Fitting	Dust Cap & Washer Kit	Slip Yoke Plug Number		
1710 SERIES (Continued) E-6.094 (6.190 FOR HR STYLE) D-1.938 USE KIT 5-280X, 5-675X							
2.5000-16 Spline (Continued)							
11.6880	30.0	2.4380	500168-2	6.3-86-18	6-68-18X	BP	6-3-3171KX <i>Relief valve in plug</i>
11.7190	45.0	3.2190	500168-2	6.3-86-18	6-68-64	BP	6-3-3461KX
11.9690	45.0	3.2190	500168-2	6.3-86-18	6-68-64	BP	6-3-3501KX
12.4690	—	3.2190	500168-2	6.3-86-18	6-68-64	BP	6-3-3561KX
12.7190	45.0	3.2190	500168-2	6.3-86-18	6-68-64	BP	6-3-3441KX
2.5000-9 Based On 10 Spline							
11.0000	22.0	3.2500	500168-2	D6B	6-68-63	BP	6-3-1601KX
3.2500-18 Involute Spline							
4.1250	8.0	1.3750	500168-2	D6E	6-68-53	BP	6-3-1661KX
4.8750	8.0	1.3750	500168-2	D6E	6-68-53	BP	6-3-1481KX
1760 SERIES E-7.000 (7.094 FOR HR STYLE) D-1.938 USE KIT 5-407X, 5-677X							
2.5000-16 Spline							
9.2500	30.0	2.9220	500168-2	6.3-86-18	6-68-74	BP	6.3-3-41KX <i>Metal, slip yoke plug no. is 6.3-68-14</i>
11.1560	30.0	2.4690	500168-2	6.3-86-18	6.5-68-64	BP	6.3-3-21KX
1810 SERIES E-7.547 (7.643 FOR HR STYLE) D-1.938 USE KIT 5-281X, 5-676X							
3.0000-16 Spline							
8.0620	30.0	2.9690	500168-2	6.5-86-38	6.5-68-74	BP	6.5-3-1571KX
8.9380	30.0	1.5620	500168-2	6.5-86-38	6.5-68-74	BP	6.5-3-1431KX
10.2500	30.0	2.3750	500168-2	6.5-86-38	8-68-13	BP	6.5-3-1351KX
11.8750	30.0	2.3750	500168-2	6.5-86-38	6.5-68-64	BP	6.5-3-1371KX
3.2500-18 Involute Spline							
5.3750	12.0	1.5000	500168-2	D6E	6-68-53	BP	6.5-3-1451KX
1880 SERIES E-8.094 D-2.188 USE KIT 5-308X							
3.0000-16 Spline							
10.0310	22.0	2.0310	500168-2	6.5-86-38	8-68-13	BP	8-3-391KX
11.6560	22.0	2.4690	500168-2	6.5-86-38	8-68-13	BP	8-3-411KX
4.1560-24 Involute Spline							
5.0310	8.0	1.7500	500168-2	D9A	8-68-24	BP	8-3-431KX



SLIP YOKE ASSEMBLIES

For Transmission Applications

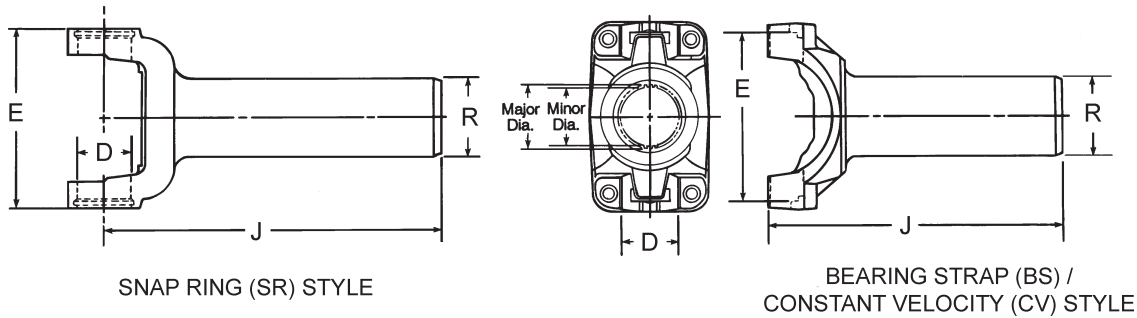


J	R	Counterbore Diameter	Style	Slip Yoke Plug Number	Slip Yoke Assembly Part Number
C/L to End of Spline	Ground Hub Diameter				
SPL55 SERIES		E-4.400	D-1.374	USE KIT SPL55-1X	
1.5750-23 Based On 24 Involute Spline					
7.9490	2.0670	—	SR	500166-26	55-3-61X
9.1220	2.0670	—	SR	500166-26	55-3-81X
1.6150-30 Based On 31 Involute Spline					
8.3390	2.1990	—	SR	500166-28	55-3-21X
1210 SERIES		E-2.688	D-1.062	USE KIT 5-443X	
.8080-18 Involute Spline					
5.0870	1.1780	1.1790	SR	500166-19	2-3-7581-2X <i>Fits some Datsun and Nissan pass cars</i>
1.1130-24 Based On 25 Involute Spline					
5.8750	1.3750	—	SR	500166-20	2-3-10071X
1310 SERIES		E-3.469	D-1.062	USE KIT 5-153X, 5-200X OR 5-785X	
1.0050-22 Based On 24 Involute Spline					
6.0400	1.3750	1.0310	SR	500166-20	2-3-13461X
1.1040-20 Based On 21 Involute Spline					
6.0000	1.5000	—	SR	500166-20	2-3-9701X
1.1130-24 Based On 25 Involute Spline					
6.5000	1.3750	—	SR	500166-20	2-3-8431X
8.2500	1.3750	1.1940	SR	2-68-153	2-3-8891X <i>Counterbore at hub end</i>
1.1230-24 Based On 26 Involute Spline					
6.0470	1.4950	1.1420	SR	500166-20	2-3-11731X <i>Counterbore at hub end</i>
1.1230-26 Involute Spline					
6.0450	1.4950	1.1600	SR	500166-20	2-3-13891X
1.1250-10 Spline					
3.4690	1.6250	—	SR	2-68-44	2-3-7501X
1.1580-25 Based On 26 Involute Spline					
6.0000	1.5590	—	SR	500166-20	2-3-8731X
6.0000	1.5580	—	SR	500166-20	2-3-9781X
1.1720-16 Spline					
4.8750	1.5000	—	SR	500166-20	2-3-1331X
1.1760-26 Based On 27 Involute Spline					
4.8750	1.5000	—	SR	500166-20	2-3-4911X
4.8910	1.5000	—	SR	500166-20	2-3-10501X
4.8910	1.5000	1.2600	SR	500166-20	2-3-9211X
<i>Corvette w/o vibration dampener</i>					
5.4690	1.5000	—	SR	2-68-23	2-3-9191X
5.4690	1.5000	—	SR	500166-20	2-3-6081X
5.7500	1.5000	—	SR	500166-20	2-3-13051X
<i>Hub diameter not ground</i>					
5.7500	1.5000	—	SR	500166-20	2-3-12411X



SLIP YOKE ASSEMBLIES

For Transmission Applications



J C/L to End of Spline	R Ground Hub Diameter	Counterbore Diameter	Style	Slip Yoke Plug Number	Slip Yoke Assembly Part Number
1310 SERIES (Continued) E-3.469 D-1.062 USE KIT 5-153X, 5-200X OR 5-785X					
1.1760-26 Based On 27 Involute Spline (Continued)					
5.7500	1.5000	—		500166-20	2-3-14771X <i>Nickel plated</i>
6.0000	1.4950	—	SR	500166-20	2-3-10391X
6.4170	1.5000	1.2320	SR	500166-20	2-3-11071X <i>Counterbore at hub end</i>
7.6200	1.5000	—	SR	500166-20	2-3-14861X <i>Nickel plated</i>
1.1760-27 Involute Spline					
5.7500	1.6030	—	SR	500166-20	2-3-15321X <i>W/4.500" OD dampener</i>
1.2200-27 Based On 28 Involute Spline					
5.3910	1.5000	—	SR	2-68-83	2-3-10771X <i>W/vibration dampener</i>
6.5000	1.5000	—	SR	500166-20	2-3-8251X
6.5000	1.5000	—	SR	500166-20	2-3-12771X <i>W/vibration dampener</i>
6.5000	1.4925	—	SR	500166-20	2-3-12981X
6.5000	1.5000	—	SR	500166-20	2-3-12781X <i>W/vibration dampener</i>
7.0000	1.5000	—	SR	500166-20	2-3-12671X
1.2200-28 Involute Spline					
6.0000	1.5000	—	SR	500166-20	2-3-4871X
1.2500-15 Based On 16 Spline					
5.3800	1.7000	1.2630	SR	2-68-23	2-3-388X <i>Part has one wide tooth and c'bore @ hub end</i>
1.2840-28 Based On 30 Involute Spline					
6.1650	1.6521	1.0190	SR	500166-22	2-3-13311X <i>Counterbore at hub end</i>
6.2660	1.6521	1.3190	SR	500166-22	2-3-14001X <i>Counterbore at hub end</i>
7.2810	1.6560	1.3240	SR	500166-22	2-3-12461X <i>Counterbore at hub end</i>
7.4220	1.6560	1.3190	SR	500166-20	2-3-10131X <i>Counterbore at hub end</i>
1.2840-29 Based On 30 Involute Spline					
6.7500	1.6750	—	SR	500166-22	2-3-13551X
6.7500	1.6810	—		500166-22	2-3-14791X
9.3300	1.6810	—		500166-22	2-3-14981X
1.3970-31 Based On 32 Involute Spline					
5.1880	1.6880	1.4580	SR	500166-22	2-3-5281X <i>Counterbore at hub end</i>
5.5000	1.8860	—	SR	500166-22	2-3-10431X
1.4030-21 Involute Spline					
4.1300	2.0000	—	SR	2-68-154	2-3-9811X



SLIP YOKE ASSEMBLIES

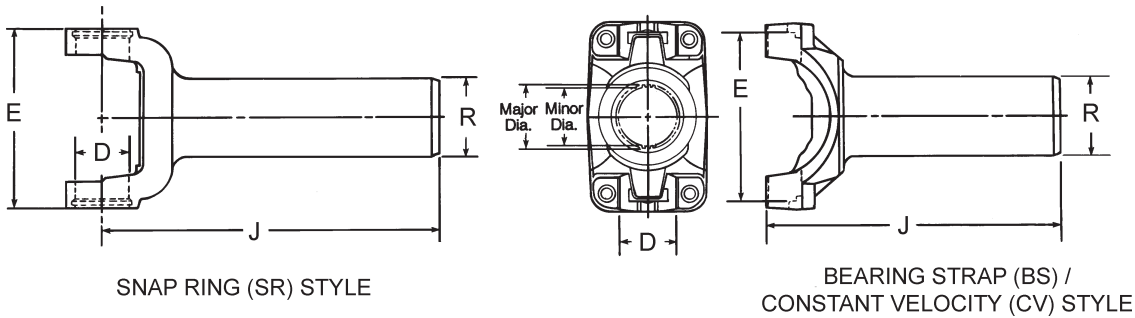
For Transmission Applications

J	R	Counterbore Diameter	Style	Slip Yoke Plug Number	Slip Yoke Assembly Part Number
C/L to End of Spline	Ground Hub Diameter				
1310 SERIES (Continued) E-3.469 D-1.062 USE KIT 5-153X, 5-200X OR 5-785X					
1.5640-24 Involute Spline					
4.1250	2.0000	—	SR	2-68-154	2-3-9761X
1330 SERIES SR: E-3.875 OTHERS E-3.625, D-1.062 USE KIT 5-213X, 5-790X					
1.1130-24 Based On 25 Involute Spline					
6.8600	1.3750	—	SR	500166-20	2-3-13731X <i>W/vibration dampener</i>
6.8600	1.3750	—	SR	500166-20	2-3-13721X
6.8600	1.3750	—	SR	500166-20	2-3-15461X
1.1580-26 Involute Spline					
7.0000	1.5585	—	SR	500166-20	2-3-14311X
1.1590-26 Involute Spline					
6.1800	1.5580	—	SR	500166-20	2-3-15051X
1.1720-26 Based On 27 Involute Spline					
6.7600	1.5000	1.2170	SR	500166-20	2-3-11781X <i>Counterbore at hub end</i>
1.1760-26 Based On 27 Involute Spline					
5.4690	1.5000	—	SR	500166-20	2-3-12081X
5.4690	1.5000	1.2180	SR	500166-20	2-3-12361X <i>W/c-bore and vibration dampener</i>
5.4690	1.5000	1.2180	SR	500166-20	2-3-12371X <i>Counterbore at hub end</i>
5.7600	1.5020	1.3200	SR	500166-20	2-3-13671X <i>Counterbore at hub end</i>
6.6200	1.5030	—	SR	500166-20	2-3-15341X <i>Nickel plated</i>
6.7600	1.5000	1.2180	SR	2-68-23	2-3-12051X <i>Counterbore at hub end</i>
7.2900	1.5585	—	SR	500166-20	2-3-14191X
1.2200-27 Based On 28 Involute Spline					
5.9060	1.5000	—	SR	500166-20	2-3-5981X
6.6300	1.5975	—	SR	500166-20	2-3-14061X
7.5000	1.5000	—	SR	500166-20	2-3-12141X
7.8590	1.5000	—	SR	500166-20	2-3-13691X
1.2840-29 Based On 30 Involute Spline					
8.0300	1.6800	—	SR	500166-22	2-3-13651X
8.0300	1.6810	1.4400	SR	500166-20	2-3-14031X <i>Nickel plated yoke w/c' bore at end</i>
9.0000	1.6880	—	SR		2-3-12101X <i>W/vibration dampener</i>
9.0000	1.6880	—	SR	500166-22	2-3-12611X <i>Nickel plated</i>
9.0000	1.6810	—	SR	500166-22	2-3-12621X <i>W/vibration dampener</i>
1.2840-30 Involute Spline					
8.0300	1.6800	1.4400	SR	500166-22	2-3-14261X <i>Counterbore at hub end</i>
9.0000	1.6800	—	SR	500166-20	2-3-14221X <i>W/vibration dampener</i>
1.3260-29 Based On 30 Involute Spline					
8.0300	1.6810	1.4400	SR	500166-22	2-3-14661X <i>Nickel plated yoke w/c' bore at end</i>
1.3780-31 Based On 32 Involute Spline					
4.8750	1.8860	—	SR	500166-22	2-3-13131X
6.1200	1.7030	—	SR	500166-22	2-3-15201X <i>W/vibration dampener</i>
6.1250	1.7030	—	SR	500166-22	2-3-15371X <i>W/vibration dampener</i>
6.7660	1.8850	—	SR	500166-22	2-3-10831X
6.7660	1.8850	—	SR	2-68-143	2-3-12191X
6.7660	1.8850	—	SR	500166-24	2-3-13811X
7.7190	1.8850	—	SR	500166-24	2-3-13881X



SLIP YOKE ASSEMBLIES

For Transmission Applications



J	R	Counterbore Diameter	Style	Slip Yoke Plug Number	Slip Yoke Assembly Part Number
C/L to End of Spline	Ground Hub Diameter				
1330 SERIES (Continued) SR: E-3.875 OTHERS E-3.625, D-1.062 USE KIT 5-213X, 5-790X					
1.3780-31 Based On 32 Involute Spline (Continued)					
7.7200	1.8850	—	SR		2-3-14831X <i>Nickel plated</i>
7.9380	1.8850	1.4100	SR	500166-24	2-3-10791X <i>Counterbore at hub end</i>
8.6400	1.8555	—	SR	500166-24	2-3-14281X <i>Nickel plated</i>
1.3780-32 Involute Spline					
7.2500	1.8850	—	SR	500166-22	2-3-14241X
8.6400	1.8555	—	SR	500166-24	2-3-14291X <i>Nickel plated</i>
1.3900-30 Based On 31 Involute Spline					
6.0000	1.6880	—	SR	500166-22	2-3-6041X
7.0000	1.6850	—	SR	500166-22	2-3-15631X
7.0000	1.8850	1.4400	SR	500166-22	2-3-10201X <i>Counterbore at hub end</i>
7.4690	1.8850	—	CV	500166-22	2-3-12961X <i>C. V. yoke</i>
7.4690	1.8850	—	CV	500166-22	2-3-12161X <i>C. V. yoke</i>
1.3970-31 Based On 32 Involute Spline					
4.8120	1.8850	1.4300	BS	500166-22	2-3-5781X <i>BS Style w/c'bore</i>
1350 SERIES E-3.875 D-1.188 USE KIT 5-178X OR 5-799X					
1.1760-26 Based On 27 Involute Spline					
6.9380	1.5000	1.2180	SR	2-68-23	3-3-4281X <i>Counterbore at hub end</i>
6.9380	1.5000	1.2180	BS	500166-20	3-3-3721X <i>Counterbore at hub end</i>
1.3260-29 Based On 30 Involute Spline					
6.6300	1.6820	—	SR	500166-22	3-3-3931X
1.3750-31 Based On 32 Involute Spline					
5.5000	1.8860	—	SR	500166-24	3-3-2431X
6.9380	1.8750	1.4100	SR	3-68-33	3-3-6481X <i>1/8" hole in welch plug</i>
6.9400	1.8855	—	SR	500166-24	3-3-6361X
1.3780-31 Based On 32 Involute Spline					
6.9380	1.8860	—	SR	500166-24	3-3-5571X
6.9380	1.8860	—	SR	3-68-33	3-3-4261X
6.9380	1.8860	—	SR	3-68-23	3-3-6471X
7.7190	1.8750	—	SR	500166-24	3-3-6441X
7.7200	1.8850	—	SR		3-3-6871X <i>Nickel plated</i>
7.9380	1.8750	1.4100	SR	500166-24	3-3-5551X <i>W/hole in welch plug; Counterbore at hub end</i>



SLIP YOKE ASSEMBLIES

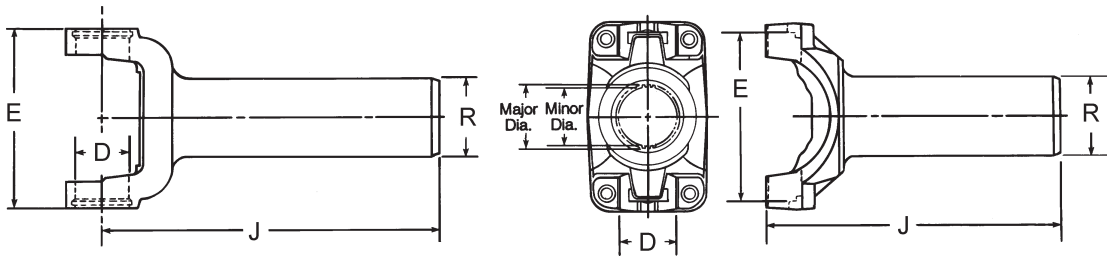
For Transmission Applications

J	R	Counterbore Diameter	Style	Slip Yoke Plug Number	Slip Yoke Assembly Part Number
C/L to End of Spline	Ground Hub Diameter				
1350 SERIES (Continued) E-3.875 D-1.188 USE KIT 5-178X OR 5-799X					
1.3900-30 Based On 31 Involute Spline					
6.5700	1.6850	—	SR	500166-22	3-3-5961X
7.4690	1.8860	—	CV	500166-22	3-3-5861X
7.4690	1.8860	—	CV	500166-22	C.V. Yoke-Nickel Plated 3-3-4531X C.V. yoke
1.3910-30 Based On 31 Involute Spline					
6.4400	1.6850	—	SR	500166-22	3-3-2491X
7.3120	1.8850	—	SR	500166-23	3-3-5431X
1.4030-21 Involute Spline					
5.3120	1.8120	—	SR	500166-24	3-3-848X
1410 SERIES E-4.438 D-1.188 USE KIT 5-160X OR 5-801X					
1.2810-28 Based On 30 Involute Spline					
8.3440	1.6810	1.4400	SR	500166-22	3-3-4181X Counterbore at hub end
1.2840-29 Based On 30 Involute Spline					
8.3440	1.6880	—	SR	500166-22	3-3-6131X
8.3440	1.6880	—	SR	500166-22	Nickel plated yoke w/vibration dampener 3-3-6121X Nickel plated
8.3440	1.6880	1.6810	SR	500166-22	3-3-4851X Nickel plated yoke w/c' bore at end
1.2850-29 Based On 30 Involute Spline					
8.3440	1.6750	—	SR	500166-22	3-3-5691X W/c-bore and vibration dampener
1.3260-29 Based On 30 Involute Spline					
8.3440	1.6810	1.4400	SR	500166-22	3-3-3251X Counterbore at hub end
8.3440	1.6810	1.4400	SR	500166-22	3-3-3271X Nickel plated yoke w/c' bore at end
1.3750-16 Spline					
5.2340	2.2500	—	SR	3-68-33	3-3-4421X Counterbore at hub end
1.3750-31 Based On 32 Involute Spline					
7.7500	1.8860	—	SR	500166-22	3-3-3891X Nickel plated
8.7500	1.8860	—	SR	500166-22	3-3-4211X W/vibration dampener
1.3780-31 Based On 32 Involute Spline					
6.9380	1.8860	1.8860	SR	500166-24	3-3-6321X
6.9400	1.8850	—	SR	500166-24	3-3-6811X
7.7500	1.8750	1.8860	SR	500166-22	3-3-3811X
8.0700	1.8855	1.8860	SR	500166-24	3-3-6421X
8.7500	1.8750	—	SR	500166-22	3-3-4401X
1.3900-30 Based On 31 Involute Spline					
6.6500	1.8860	—	SR	500166-22	3-3-5981X
8.1100	1.8860	—	SR	500166-22	3-3-6001X Nickel plated
8.1100	1.8860	—	SR	500166-22	3-3-6661X
1.4630-21 Based On 22 Involute Spline					
7.3100	2.0200	—	SR	500166-24	3-3-6341X
1.6150-30 Based On 31 Involute Spline					
7.7500	2.2010	—	SR	500166-28	3-3-5631X
8.3440	2.2010	—	SR	500166-28	3-3-4391X
8.3440	2.2010	—	SR	500166-28	3-3-6141X W/vibration dampener
8.3440	2.2010	—	SR	500166-28	3-3-3441X



SLIP YOKE ASSEMBLIES

For Transmission Applications



SNAP RING (SR) STYLE

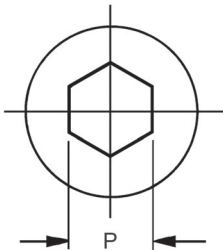
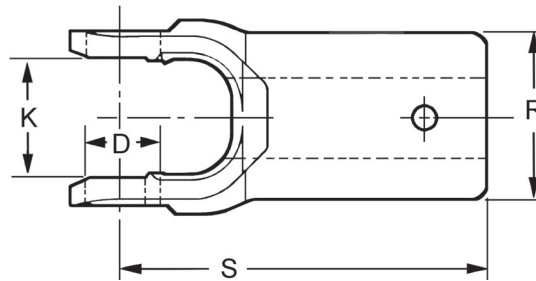
BEARING STRAP (BS) /
CONSTANT VELOCITY (CV) STYLE

J C/L to End of Spline	R Ground Hub Diameter	Counterbore Diameter	Style	Slip Yoke Plug Number	Slip Yoke Assembly Part Number
1410 SERIES (Continued) E-4.438 D-1.188			USE KIT 5-160X OR 5-801X		
1.6150-30 Based On 31 Involute Spline (Continued)					
8.3440	2.2030	—	SR	500166-28	3-3-4131X
8.3440	2.2010	—	SR	500166-28	3-3-4391X with vibration dampener 3-3-6541X
1.6160-30 Based On 31 Involute Spline					
7.7500	2.2000	—	SR	500166-28	3-3-5611X <i>Nickel plated</i>
1480 SERIES E-4.438 D-1.375			USE KIT 5-188X OR 5-803X		
1.3900-30 Based On 31 Involute Spline					
6.8700	1.8860	—	SR	500166-23	3-3-6021X
1.6540-20 Involute Spline					
4.5600	—	—	SR	500166-26	3-3-3151X <i>Hub diameter not ground</i>
1550 SERIES E-5.250 D-1.375			USE KIT 5-155X OR 5-808X		
1.8750-14 Involute Spline					
4.2030	3.0000	—	SR	500166-31	4-3-1961X
4.7030	2.7500	—	SR	500166-31	4-3-1951X
2.3750-46 Involute Spline					
4.8750	3.1250	—	SR	500166-46	4-3-2441X <i>Includes flinger</i>

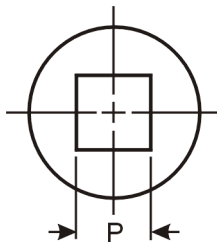


SLIP YOKE ASSEMBLIES

Hex, Square and Round Hole

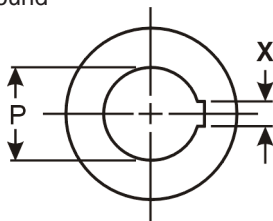


P	Lube Fitting Part Number	Slip Yoke Assembly Number
Hex Across Flats		
1000 SERIES		USE KIT 5-170X
.8750	500174-1	10-3-162X
1.1250	500174-1	10-3-32X



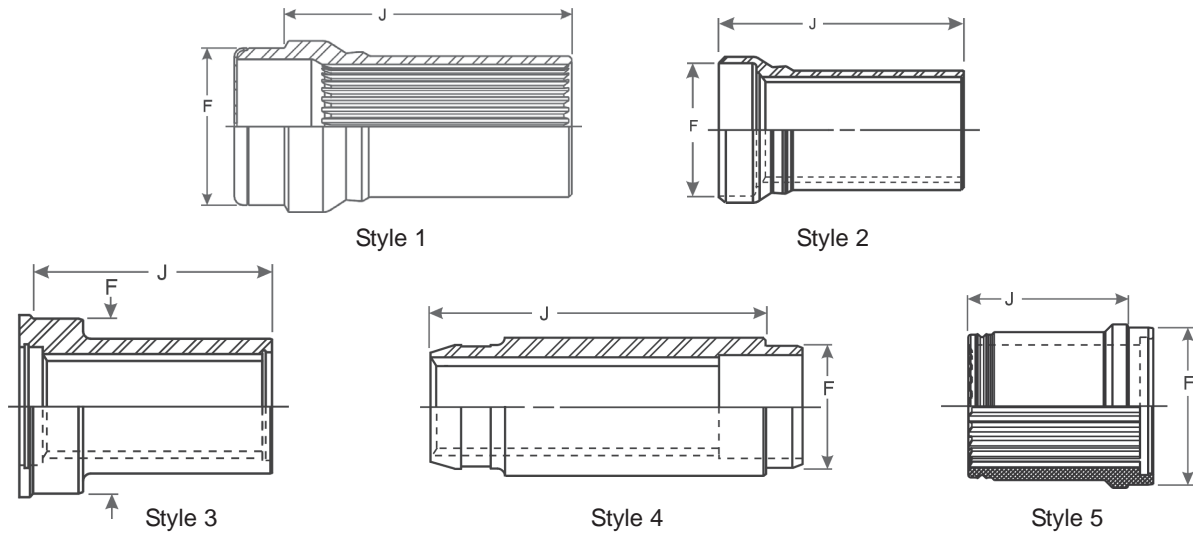
P	Lube Fitting Part Number	Slip Yoke Assembly Number
Square Hole Across Flats		
1000 SERIES		USE KIT 5-170X
.7500	500174-1	10-3-12X
.8750	500174-1	10-3-22X
1.0000	500174-1	10-3-122X

Round



P	SAE Keyway Width	Lube Fitting Part Number	Slip Yoke Assembly Number
Round Hole Diameter			
1000 SERIES			USE KIT 5-170X
.7500	.1880	500174-1	10-3-13X
.8120	.2500	500174-1	10-3-23X
.8750	.2500	500174-1	10-3-33X
1.0000	.2500	500174-1	10-3-83X
1.1250	.3120	500174-1	10-3-183X
1.2500	.3120	500174-1	10-3-163X





J	Style	Fits Tube Part Number	Mates w/ Part Number	F Butt Diameter	Splined Sleeve Detail	Slinger Part Number	Slip Yoke Assembly Part Number
SPL140 SERIES							
3.0710-30 Involute Spline							
6.7130	1	100-30-3	140-82-21X	3.9370	140-55-11	232755	140-55-21X
SPL170 SERIES							
3.4650-34 Involute Spline							
7.2050	2	170-28-37	170-82-131X	4.3460			170-55-81 <i>Sleeve Only-No Assembly</i>
7.9720	1	110-30-5	170-82-61X	4.3500	170-55-11-2	232700	170-55-21-2X
7.9840	2	170-28-37	170-82-71X	4.3460			170-55-51-1
8.7710	2	170-28-37	170-82-71X	4.3460			170-55-51-2
9.1530	1	110-30-5	170-82-61X	4.3500	170-55-11-1	232700	170-55-21-1X
9.5590	2	170-28-37	170-82-71X	4.3460			170-55-51-3
10.3460	2	170-28-37	170-82-71X	4.3460			170-55-51-4
SPL250 SERIES							
3.8580-38 Involute Spline							
6.9090	1	120-30-3		4.7440	250-55-21	232696	250-55-31X <i>Fits all 120-30 tubes</i>
1310 SERIES							
1.2500-16 Spline							
4.2500	4	14-30-62	2-82-1641	1.5700	2-55-523		2-55-533X
1.3750-16 Spline							
5.0300	4	2-28-3707X	211256X	—			2-55-51
3.0020-22 Based On 23 Involute Spline							
3.5800	5	32-38-12	2-82-1901X	3.8540	2-55-141	6.5-68-64	2-55-258X <i>Material: Aluminum</i>
3.9100	5	32-38-12	2-82-1971X	3.8540	2-55-181	6.5-68-64	2-55-268X <i>Material: Aluminum</i>
1410 SERIES							
1.7500-16 Spline							
4.4100	3	211140X-	3-82-781	2.5940	3-55-33	4-68-143	3-55-38X
1550 SERIES							
2.0000-16 Spline							
4.5600	3	210833X-	4-82-211	3.3200	4-55-43	4-68-43	4-55-48X
1710 SERIES							
2.5000-16 Spline							
5.7200	3	211110X-	6-82-1131-2	5.0200	6-55-43	6.5-68-13	6-55-38X



1-3-18KX 3	2-3-11071X 12	2-3-14001X 12
1-3-88KX 3	2-3-11351X 4	2-3-14031X 13
10-3-121KX 3	2-3-11731X 11	2-3-14061X 13
10-3-122X 17	2-3-11781X 13	2-3-14191X 13
10-3-12X 17	2-3-11991KX 5	2-3-1421KX 4
10-3-131X 3	2-3-12031KX 5	2-3-14221X 13
10-3-13X 17	2-3-12051X 13	2-3-14241X 14
10-3-162X 17	2-3-12081X 13	2-3-14261X 13
10-3-163X 17	2-3-12101X 13	2-3-14281X 14
10-3-183X 17	2-3-12141X 13	2-3-14291X 14
10-3-18KX 3	2-3-12161X 14	2-3-14311X 13
10-3-22X 17	2-3-12191X 13	2-3-14331X 5
10-3-23X 17	2-3-12301KX 4	2-3-1461KX 4
10-3-291KX 3	2-3-12311X 4	2-3-14661X 13
10-3-32X 17	2-3-12361X 13	2-3-14771X 12
10-3-33X 17	2-3-12371X 13	2-3-14791X 12
10-3-51X 3	2-3-12411X 11	2-3-14831X 14
10-3-81X 3	2-3-12421X 4	2-3-14861X 12
10-3-83X 17	2-3-12461X 12	2-3-14981X 12
140-55-21X 18	2-3-12611X 13	2-3-15051X 13
170-55-21-1X 18	2-3-12621X 13	2-3-15201X 13
170-55-21-2X 18	2-3-12671X 12	2-3-15321X 12
170-55-51-1 18	2-3-12771X 12	2-3-15341X 13
170-55-51-2 18	2-3-12781X 12	2-3-15371X 13
170-55-51-3 18	2-3-12881X 4	2-3-15461X 13
170-55-51-4 18	2-3-128KX 4	2-3-15631X 14
170-55-81 18	2-3-12961X 14	2-3-1781KX 4
2-3-10071X 11	2-3-12981X 12	2-3-178KX 4
2-3-10131X 12	2-3-13051X 11	2-3-1931KX 4
2-3-10201X 14	2-3-13131X 13	2-3-198KX 4
2-3-10261KX 5	2-3-13221X 5	2-3-258KX 4
2-3-10391X 12	2-3-13311X 12	2-3-348KX 4
2-3-10411X 4	2-3-1331X 11	2-3-388X 12
2-3-10431X 12	2-3-13461X 11	2-3-3951KX 4
2-3-10501X 11	2-3-13551X 12	2-3-4071KX 4
2-3-10521X 3	2-3-13571X 5	2-3-4441KX 4
2-3-10571KX 5	2-3-13651X 13	2-3-4681KX 5
2-3-10621KX 4	2-3-13671X 13	2-3-4871X 12
2-3-10641KX 5	2-3-13691X 13	2-3-4911X 11
2-3-10661X 4	2-3-13721X 13	2-3-4951KX 4
2-3-10771X 12	2-3-13731X 13	2-3-5221X 4
2-3-10791X 14	2-3-13811X 13	2-3-5281X 12
2-3-10801X 5	2-3-13831X 5	2-3-5781X 14
2-3-10831X 13	2-3-13881X 13	2-3-5821X 4
2-3-10871X 5	2-3-13891X 11	2-3-5981X 13



2-3-6041X 14	3-3-1421KX 6	3-3-4651X 6
2-3-6061KX 5	3-3-1481KX 7	3-3-4671KX 6
2-3-6081X 11	3-3-1501KX 6	3-3-468KX 7
2-3-7171KX 4	3-3-1511KX 7	3-3-4781X 6
2-3-7481X 5	3-3-1561KX 6	3-3-4851X 15
2-3-7501X 11	3-3-1601KX 8	3-3-4871X 7
2-3-7581-2X 11	3-3-1621KX 8	3-3-488KX 6
2-3-7661KX 4	3-3-1641KX 8	3-3-4991KX 6
2-3-7681KX 5	3-3-1701KX 7	3-3-508KX 7
2-3-7691KX 5	3-3-1831KX 7	3-3-5141X 8
2-3-7961KX 5	3-3-2041KX 7	3-3-5181KX 6
2-3-7981KX 4	3-3-2431X 14	3-3-5411KX 7
2-3-8001KX 4	3-3-2471KX 6	3-3-5431X 15
2-3-8021KX 4	3-3-2491X 15	3-3-5461X 6
2-3-8041KX 5	3-3-2591KX 6	3-3-5481KX 7
2-3-8111KX 5	3-3-2681KX 6	3-3-5491X 7
2-3-8251X 12	3-3-2701KX 6	3-3-5551X 14
2-3-8311X 5	3-3-2801KX 6	3-3-5571X 14
2-3-8431X 11	3-3-2931KX 6	3-3-5611X 16
2-3-8481X 5	3-3-3001X 6	3-3-5631X 15
2-3-8731X 11	3-3-3121X 8	3-3-5691X 15
2-3-8741X 5	3-3-3151X 16	3-3-5861X 15
2-3-8811X 3	3-3-3211X 7	3-3-5921KX 6
2-3-8841KX 4	3-3-3251X 15	3-3-5961X 15
2-3-8861X 3	3-3-3271X 15	3-3-5981X 15
2-3-8891X 11	3-3-3441X 15	3-3-598KX 6
2-3-8921X 5	3-3-3601X 6	3-3-6001X 15
2-3-8941KX 5	3-3-3721X 14	3-3-6021X 16
2-3-8961X 3	3-3-3791X 7	3-3-6041X 7
2-3-9191X 11	3-3-3811X 15	3-3-6061X 8
2-3-9211X 11	3-3-3871KX 7	3-3-6121X 15
2-3-9371X 5	3-3-388KX 6	3-3-6131X 15
2-3-9491X 3	3-3-3891X 15	3-3-6141X 15
2-3-9681X 3	3-3-3931X 14	3-3-6201X 6
2-3-9701X 11	3-3-398KX 6	3-3-6321X 15
2-3-9761X 13	3-3-4131X 16	3-3-6341X 15
2-3-9781X 11	3-3-4181X 15	3-3-6361X 14
2-3-9811X 12	3-3-4211X 15	3-3-6381X 6
2-3-9991X 3	3-3-4261X 14	3-3-6421X 15
250-55-31X 18	3-3-4281X 14	3-3-6441X 14
2-55-258X 18	3-3-4391X 15	3-3-6471X 14
2-55-51 18	3-3-4401X 15	3-3-6481X 14
2-55-268X 18	3-3-4421X 15	3-3-6541X 16
2-55-533X 18	3-3-4531X 15	3-3-6611X 7
3-3-118KX 7	3-3-4551KX 7	3-3-6641X 7



3-3-6661X	15	5-3-488KX	9
3-3-6791X	7	55-3-21X	11
3-3-6811X	15	55-3-61X	11
3-3-6871X	14	55-3-81X	11
3-3-6981X	6	6.3-3-21KX	10
3-3-7001X	7	6.3-3-41KX	10
3-3-748KX	7	6.5-3-1351KX	10
3-3-758KX	6	6.5-3-1371KX	10
3-3-768KX	7	6.5-3-1431KX	10
3-3-788KX	7	6.5-3-1451KX	10
3-3-798KX	7	6.5-3-1571KX	10
3-3-848X	15	6-3-1481KX	10
3-55-38X	18	6-3-1601KX	10
4-3-1241KX	8	6-3-1661KX	10
4-3-1261KX	8	6-3-2631KX	9
4-3-1411KX	8	6-3-2651KX	9
4-3-1431KX	8	6-3-2671KX	9
4-3-1641KX	8	6-3-2721KX	9
4-3-1751KX	8	6-3-2741KX	9
4-3-1921KX	8	6-3-2761KX	9
4-3-1951X	16	6-3-2801KX	9
4-3-1961X	16	6-3-3151KX	9
4-3-2041KX	8	6-3-3171KX	10
4-3-2121KX	8	6-3-3321KX	9
4-3-2141KX	8	6-3-3441KX	10
4-3-2331X	8	6-3-3461KX	10
4-3-2441X	16	6-3-3481KX	9
4-3-88KX	8	6-3-3501KX	10
4-55-48X	18	6-3-3521KX	9
5-3-108KX	9	6-3-3541KX	9
5-3-128KX	9	6-3-3561KX	10
5-3-1411KX	9	6-3-3661KX	9
5-3-168KX	9	6-55-38X	18
5-3-1711KX	9	70-3-21X	3
5-3-1861KX	9	70-3-41X	3
5-3-198KX	9	8-3-391KX	10
5-3-2261KX	9	8-3-411KX	10
5-3-288KX	9	8-3-431KX	10
5-3-3101KXM	9	90-3-21X	3
5-3-3121KX	9	90-3-41X	3
5-3-3181KX	9		
5-3-3321KX	9		
5-3-368KX	9		
5-3-398KX	9		
5-3-458KX	9		



Dana Corporation strives to publish catalogs that are as accurate and user-friendly as possible. Continuous improvement is our ongoing mission. Therefore, we welcome any and all of our customers' comments. Please forward your comments with any suggested improvements or corrections to our Catalog Department via Fax or mail.

Fax: Product Management / Catalog Department
(419) 866-3924

Mail: Dana Corporation
Heavy Vehicle Technologies and Systems Service
Attn: Product Management / Catalog Department
PO Box 321
Toledo, OH 43697-0321

Comments and Suggested Improvement/Corrections	Page Number	Part Number





Dana Corporation
**Heavy Vehicle Technologies &
Systems Service**
PO Box 321
Toledo, Ohio 43697-0321
1-800-SAY-DANA (729-3262)
www.dana.com
www2.dana.com/expert

Dana Corporation
**Heavy Vehicle Technologies &
Systems Service - Canada**
5095 South Service Road
Beamsville, Ontario LOR 1B0
Tech Service: (905) 563-4991

Dana Corporation
**Heavy Vehicle Technologies &
Systems Service - International**
10800 NW 103rd Street, Suite 11
Miami, Florida 33178
305-499-5100

