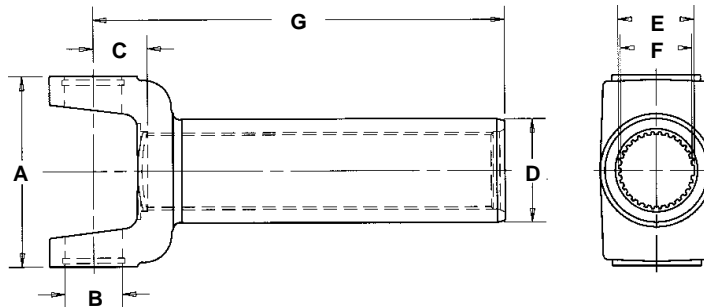




# Product Announcement

## TRANSMISSION SLIP YOKES

### Outside Snap Ring



Spline Data		G	C	D	Joint Angle	Spline Length (CB—Counterbore In End of Barrel) (FS—Fully Splined)	Slip Yoke Assembly Part Number
E Major Diameter Max/Min	F Minor Diameter Max/Min						
<b>N1310 Series</b>		<b>use Kit No. 1-0153</b>		<b>A-3.469</b>	<b>B-1.063</b>	(Replaces Spicer® No.5-153X)	
<b>1.172 - 26 Based on 27 Involute Spline</b>							
1.176/1.175	1.102/1.097	5.470	.910	1.500	—	FS	<b>N2-3-6081X</b> <i>(fits Turbo 350 Transmission)</i>
<b>1.312 - 29 Based on 30 Involute Spline</b>							
1.312/1.311	1.211/1.209	8.060	1.360	1.680	22°	FS	<b>N2-3-3575X</b> <i>fits Detroit (Chrysler 727 transmission) applications</i> OEM # 2883575
<b>N1350 Series</b>		<b>use Kit No. 2-0053</b>		<b>A-3.875</b>	<b>B-1.188</b>	(Replaces Spicer® No.5-178X)	
<b>1.172 - 26 Based on 27 Involute Spline</b>							
1.176/1.175	1.102/1.097	6.938	1.188	1.500	—	CB	<b>N3-3-4281X</b> <i>OE #26019634</i>
<b>Used on 1996-2002 GM Full Size Vans (700 R4 Transmission &amp; 4L60E Transfer Case)</b>							
<b>1.378 - 31 Based on 32 Involute Spline</b>							
1.379/1.378	1.309/1.307	6.938	1.313	1.886	—	FS	<b>N3-3-4261X</b> <i>OE #26045229</i>
<b>Used on 1996-2002 GM Full Size Vans</b>							
1.379/1.378	1.309/1.307	7.875	1.313	1.886	—	FS	<b>N3-3-9467X</b> <i>OE #7839467</i>
<b>Used on 1982-1999 GM Full Size Trucks (208 &amp; NP241 Transfer Case)</b>							

NEAPCO INC. 740 Queen St. Pottstown, PA 19464

A QS-9000/ISO9001 Certified Company

Phone: 800-821-2374  
E-mail: [hd@neapco.com](mailto:hd@neapco.com)

Fax: 610-326-2002  
Web site: [www.neapco.com](http://www.neapco.com)

©2002 Neapco Inc.

( Insert this sheet into  
Section III in the  
DS245 Master Catalog )

9901218

06/02